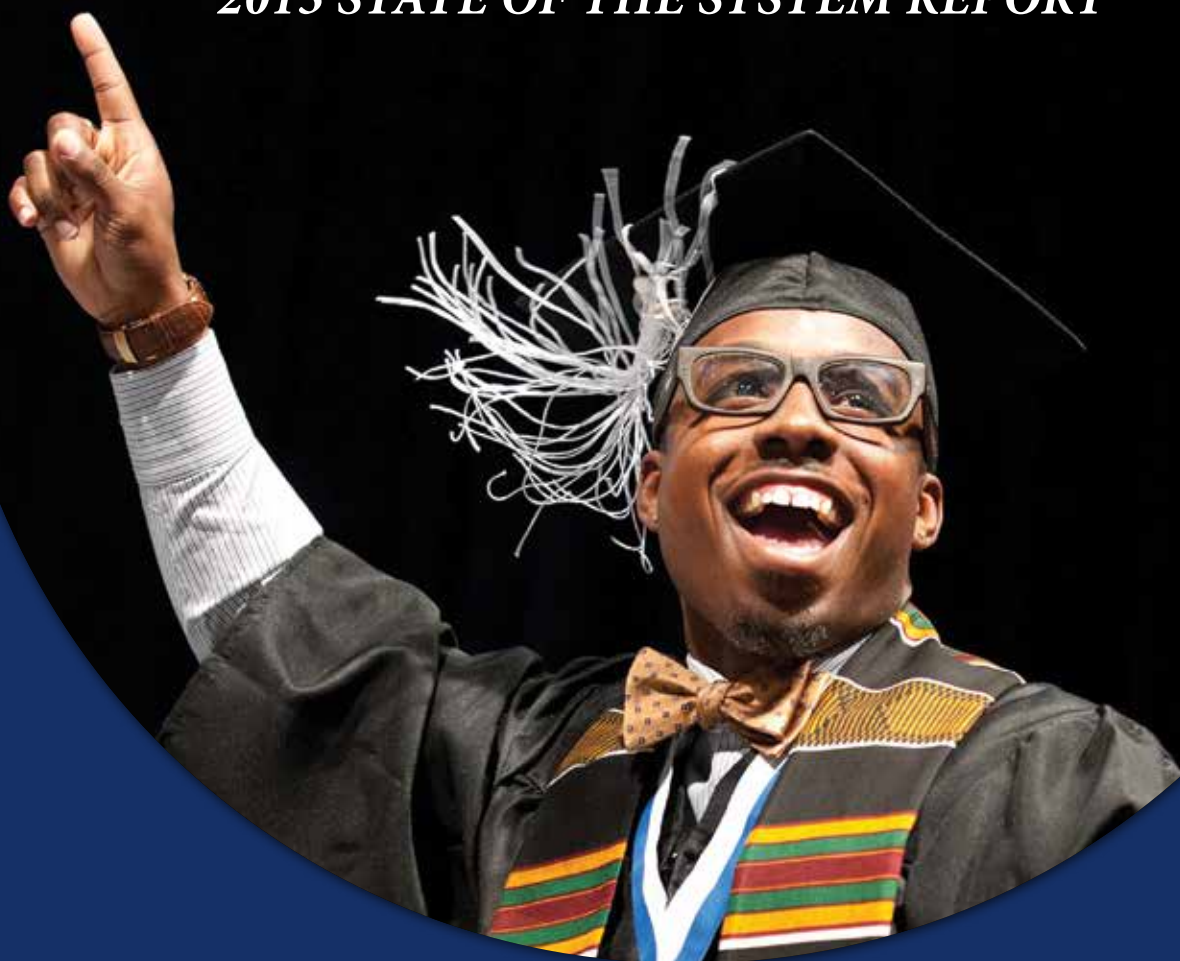


# STUDENT SUCCESS SCORECARD

*2013 STATE OF THE SYSTEM REPORT*



*California Community Colleges Chancellor's Office  
Brice W. Harris, Chancellor*

**CALIFORNIA COMMUNITY COLLEGES CHANCELLOR'S OFFICE  
STUDENT SUCCESS SCORECARD 2013  
STATE OF THE SYSTEM REPORT**

**Introduction**

The tables offer a number of performance measures reflecting the enrollment, progress, and educational attainments of California Community Colleges students over the past several years.

**Table 1. Annual Number of Community Colleges Transfers to CSU and UC**

Table 1 displays the annual number of transfers from the California Community Colleges system to the California State University and University of California systems.

Transfer patterns to the University of California and the California State University systems differed sharply (Figure 1). Transfers to the University of California System showed a gradual increase over the five year period. Transfers to the California State University system were more variable; decreasing significantly from 2007-08 through 2009-10, increasing sharply in 2010-11, then decreasing again over the next two years.

**Table 2. Annual Number of Community Colleges Transfers to Baccalaureate-Granting Institutions**

Table 2 lists the annual number of transfers from the California Community Colleges system to baccalaureate-granting institutions other than the California State University and University of California systems. The total number of transfers increased from 2006-07 through 2009-10, then decreased for the latter two years (Figure 2a).

In-State For-Profit institution transfers increased from 2006-07 through 2009-10, then decreased sharply over the two following years (Figure 2b). In-State Nonprofit institution transfers have been variable, shifting between increases and decreases on an almost yearly basis.

Transfers to Out-Of-State institutions have increased overall (Figure 2c). Increases were evident for all three types of Out-Of-State institutions: Public, Private For-Profit, and Private Nonprofit.

**Table 3. Annual Number of Awards by Type**

Table 3 displays the different types of degrees and certificates awarded annually by the California Community Colleges system. The total number of awards has increased steadily since 2009-10 (Figure 3).

**Table 4. Top 25 Credit Programs in 2012-13 by Volume of Total Awards**

Table 4 shows the degrees and certificates with the largest volume during the 2012-13 academic year. The most common total credit award was "Liberal Arts and Sciences, General" followed by "Biological and Physical Sciences (and Mathematics), then "Humanities."

### **Table 5 Through Table 8. Participation Rates**

Table 5 through Table 8 present the rates at which California citizens enroll at a California Community College. Participation is expressed as “Rate per 1,000 population” and is broken out by gender, race/ethnicity, and age groups. Overall, there has been a steady decline in participation (Figure 5). The decline is evident across gender (Figure 6), age group (Figure 7), and race/ethnicity (Figure 8) except for the “Multi-Race” subcategory, which showed an increase. (The increase in this category may be due to increasing numbers or better reporting; the “Multi-Race” option was added to available categories in 2008.)

Female Californians participated at a higher rate than males in all five years. Participation was inversely related to age; the older the Californian, the lower the participation rate. Overall, racial and ethnic minorities participated in the California Community Colleges system at rates higher than Non-Hispanic Whites.

### **Table 9. Scorecard Metrics**

Table 9 tallies the eight Scorecard metrics over a five-year period, based on groups of first-time students beginning in academic year 2002-03 through those beginning in 2006-07. In each case, the students’ progress was measured at six years beyond their starting point. Three metrics – Completion, Persistence, and 30-Units – divide the students into two groups according to their level of academic preparation when first enrolling in a community college. The “Prepared” group started in college level math or English while the “Unprepared” group began by taking at least one remedial course in math or English.

Prepared students reached the “Completion” (e.g. obtained a degree or certificate, transferred to a baccalaureate-granting institution, or successfully completed 60 UC/CSU transferable units with a GPA of at least 2.0) at a much higher rate than unprepared students.

The percentages of students successfully completing remedial English, math, or ESL classes were consistently low, ranging for 21.3% to 38.1%.

### **Table 10. Annual Student Headcount (Unduplicated)**

Table 10 exhibits the number of students enrolled in the California Community College system. Enrollment decreased in 2003-04 then increased steadily through 2008-09. Since 2008-09, the student headcount has decreased each year (Figures 10a and 10b).

### **Table 11. Distribution of Student Enrollment Status**

Table 11 reflects the four major types of enrollment in the California Community College system (Figure 11). The rate of “Continuing” enrollments increased by nine percentage points. The percentage of “First-Time Transfer” enrollments declined slightly and the percentage of “Returning” enrollments declined significantly from 16% to 11%. The percentages of the “K-12/Special Admit” enrollment category remained flat.

### **Table 12. Course Sections Offered By Academic Year**

Table 12 lays out the number and percent change of credit and noncredit course sections. The number for both credit and noncredit sections decreased in 2003-04, then increased steadily through 2008-09. Since 2008-09, the number of sections offered has decreased each year (Figures 12a and 12b). Noncredit sections decreased at a greater rate than credit sections over the past five years (Figure 12c).

### **Table 13. Median Course Section Size**

Table 13 lists median size for credit and noncredit sections offered. Credit sections have increased slightly over the past ten years while noncredit section size has remained stable (Figure 13).

### **Table 14. Annual Full-Time Equivalent Students**

Table 14 displays annual credit and noncredit Full-Time Equivalent Students (FTES). FTES is the major student workload measure, one of several, used in determining the eligibility for state funding of community colleges. FTES is not "headcount enrollment," but is the equivalent of 525 hours of student instruction. Similar to headcount, total FTES increased from 2003-04 through 2008-09, then decreased for each of the next five years. Noncredit FTES decreased more than credit FTES during that period (Figures 14a and 14b).

### **Table 15. Average FTES Generated By Headcount**

Table 15 shows the average Full-Time Equivalent Students (FTES). This measure divides the annual FTES into the corresponding headcount and provides an indication of full-time vs. part-time attendance (Figure 15). Higher averages are associated with heavier course loads. There has been a gradual increase in the averages over between 2002-03 and 2013-13, reflecting slightly heavier course loads.

### **Table 16. Credit Course Success Rate by Type**

Table 16 presents the success rate for the major categories of credit courses. Success rates have held relatively steady from 2002-03 through 2012-13 (Figure 16). Basic Skills course completion rates increased the most of the four categories, with a change of 4.5% over the ten year period. The other three course types – Degree Applicable, Transferable, and Career Technical Education – had completion rates that improved an average of 2.7% during the same time.

### **Tables and Graphs**

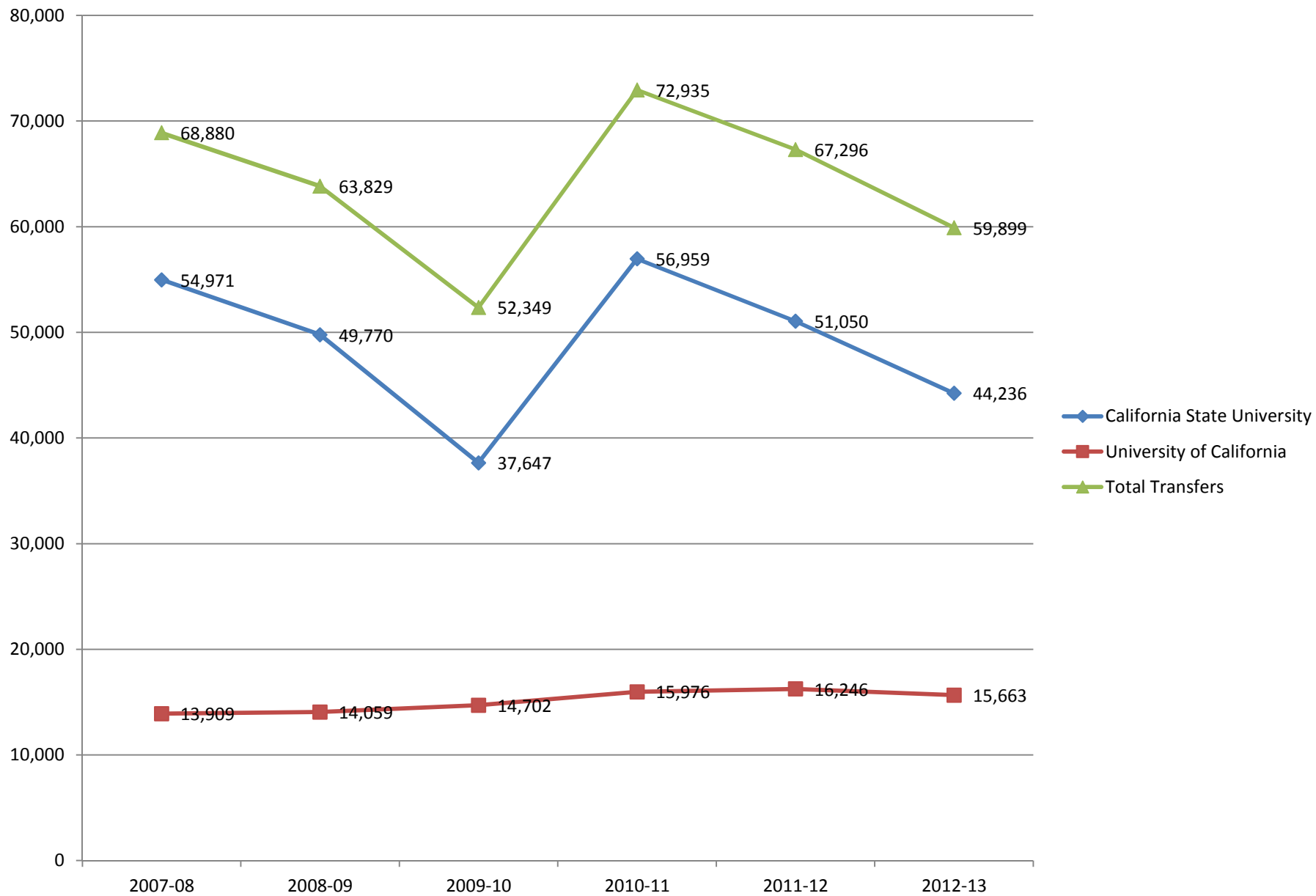
**Table 1. Annual Number of Community Colleges Transfers to CSU and UC**

<b>Transfer Destination</b>	<b>2007-08</b>	<b>2008-09</b>	<b>2009-10</b>	<b>2010-11</b>	<b>2011-12</b>	<b>2012-13</b>
California State University <sup>a</sup>	54,971	49,770	37,647	56,959	51,050	44,236
University of California <sup>b</sup>	13,909	14,059	14,702	15,976	16,246	15,663
Total Transfers	68,880	63,829	52,349	72,935	67,296	59,899

<sup>a</sup> California State University

<sup>b</sup> University of California

**Figure 1. Transfers to California State University and University of California Systems**

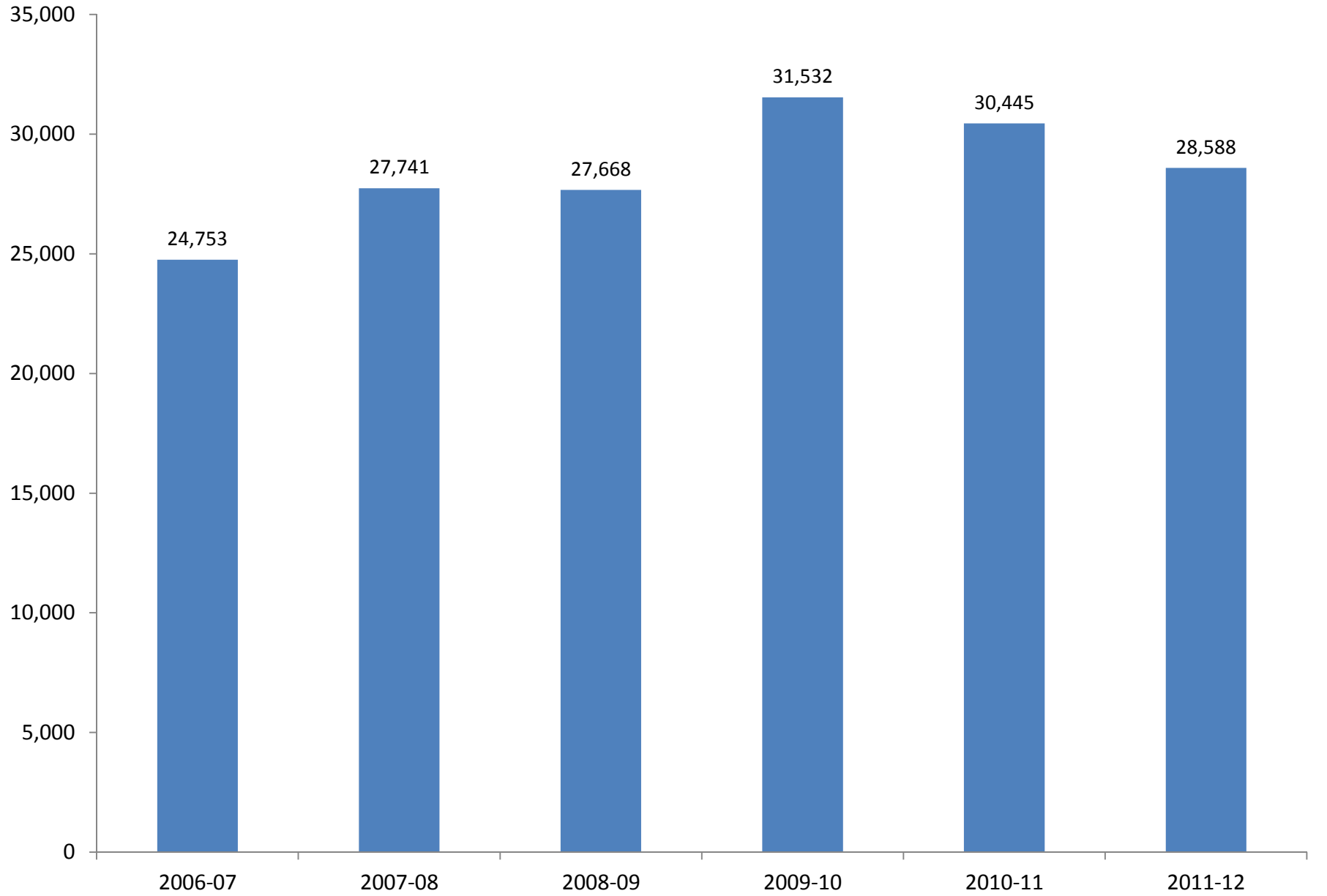


**Table 2. Annual Number of Community Colleges Transfers to Baccalaureate-Granting Institutions8**

<b>Transfer Destination</b>	<b>2006-07</b>	<b>2007-08</b>	<b>2008-09</b>	<b>2009-10</b>	<b>2010-11</b>	<b>2011-12</b>
In-State Private (ISP)	14,486	16,813	15,759	18,179	15,780	13,897
ISP For-Profit	7,668	7,957	8,481	9,733	7,018	6,297
ISP Nonprofit	6,818	8,856	7,278	8,446	8,762	7,600
Out-Of-State (OOS)	10,267	10,928	11,909	13,353	14,665	14,691
OOS Public	5,936	5,989	6,238	6,746	7,566	7,619
OOS Private For-Profit	539	1,008	1,698	2,248	2,491	2,359
OOS Private Nonprofit	3,792	3,931	3,973	4,359	4,608	4,713
Total Transfers	24,753	27,741	27,668	31,532	30,445	28,588

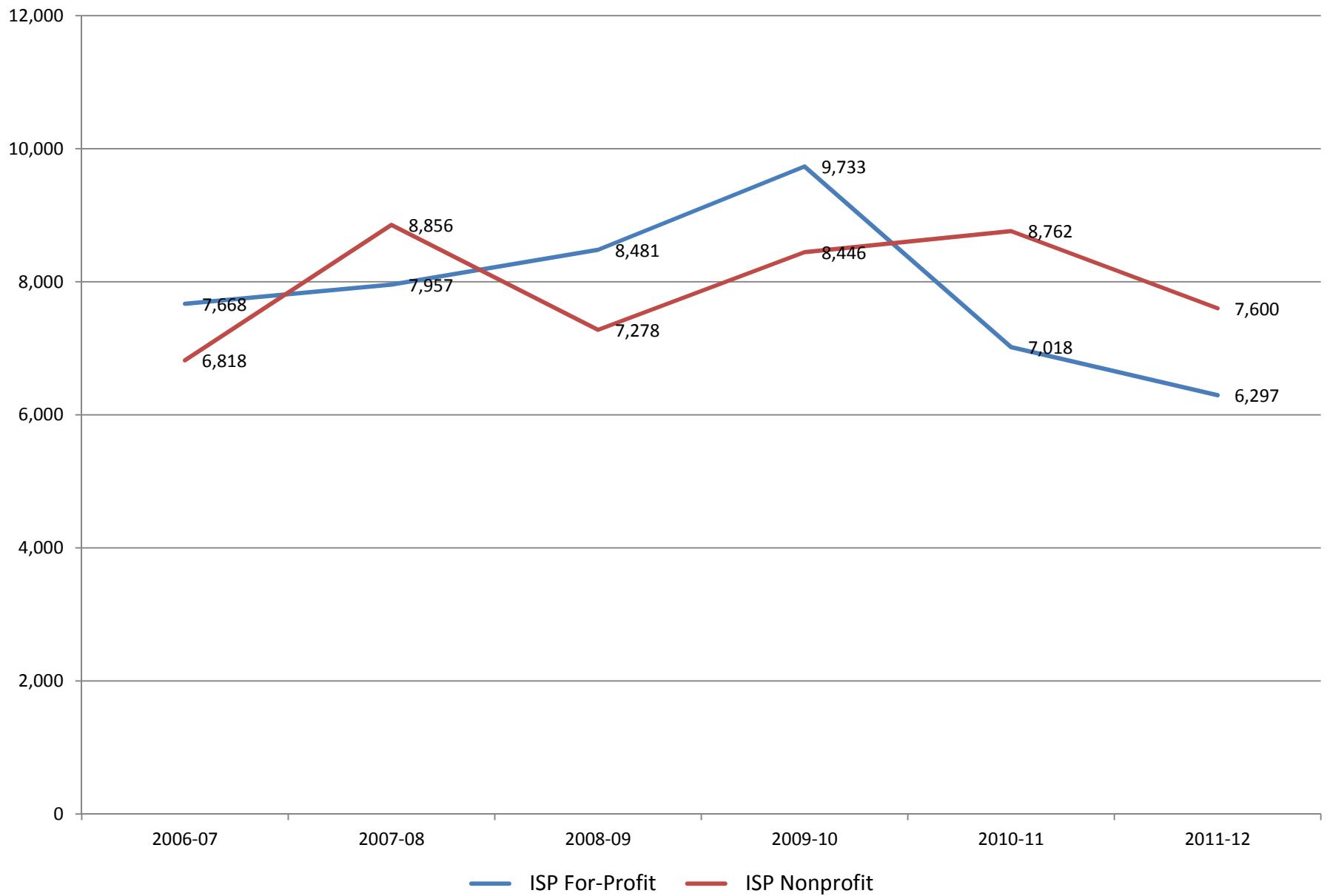
\* Transfers to California State University and University of California systems not included.

**Figure 2a. Annual Number of Community Colleges Transfers to Baccalaureate-Granting Institutions**

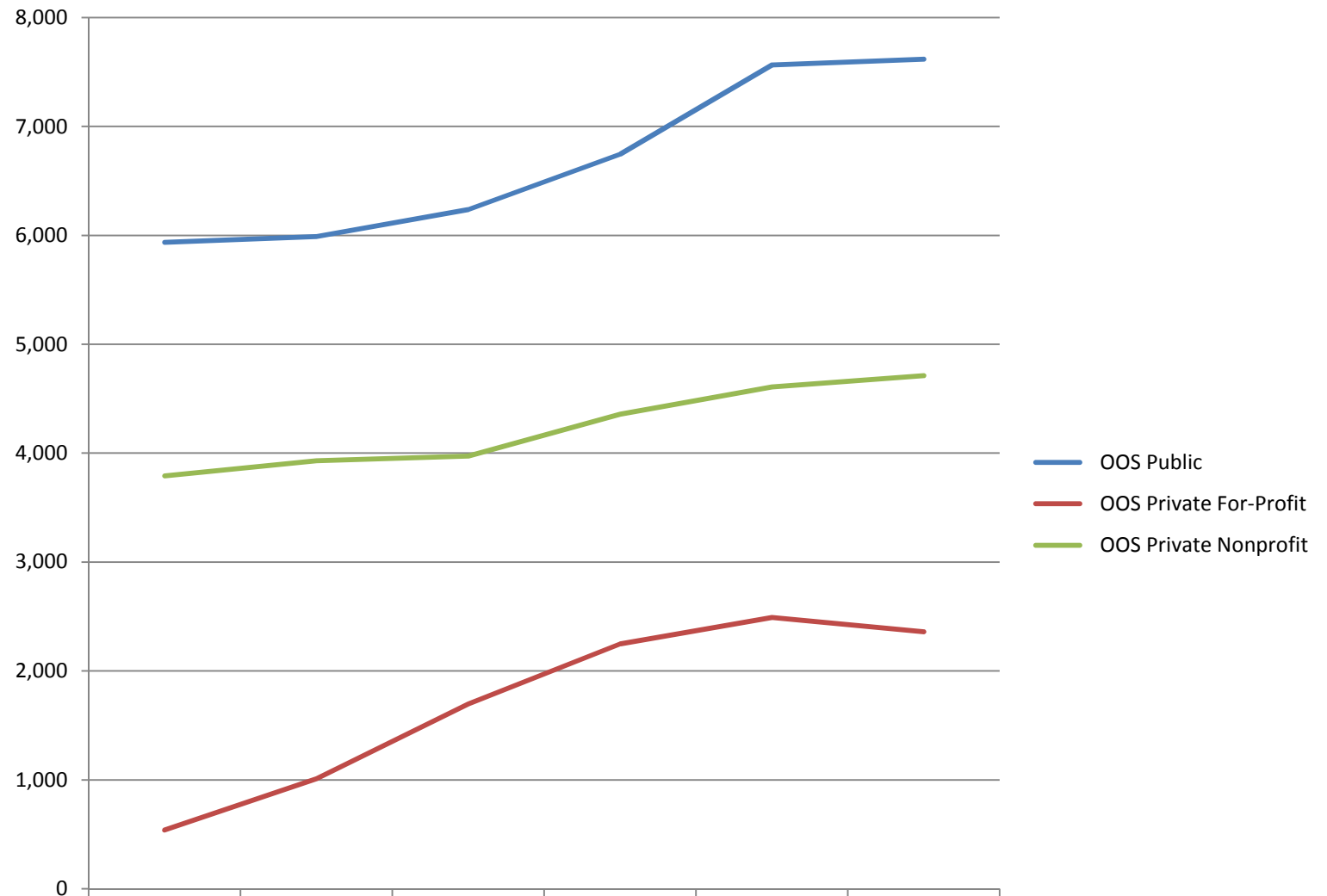




**Figure 2b. Transfers to In-State Private For-Profit and Nonprofit Institutions**



**Figure 2c. Transfers to Out-Of-State Public, Private For-Profit, and Private Nonprofit**



	2006-07	2007-08	2008-09	2009-10	2010-11	2011-12
— OOS Public	5,936	5,989	6,238	6,746	7,566	7,619
— OOS Private For-Profit	539	1,008	1,698	2,248	2,491	2,359
— OOS Private Nonprofit	3,792	3,931	3,973	4,359	4,608	4,713

**Table 3. Annual Number of Awards by Type**

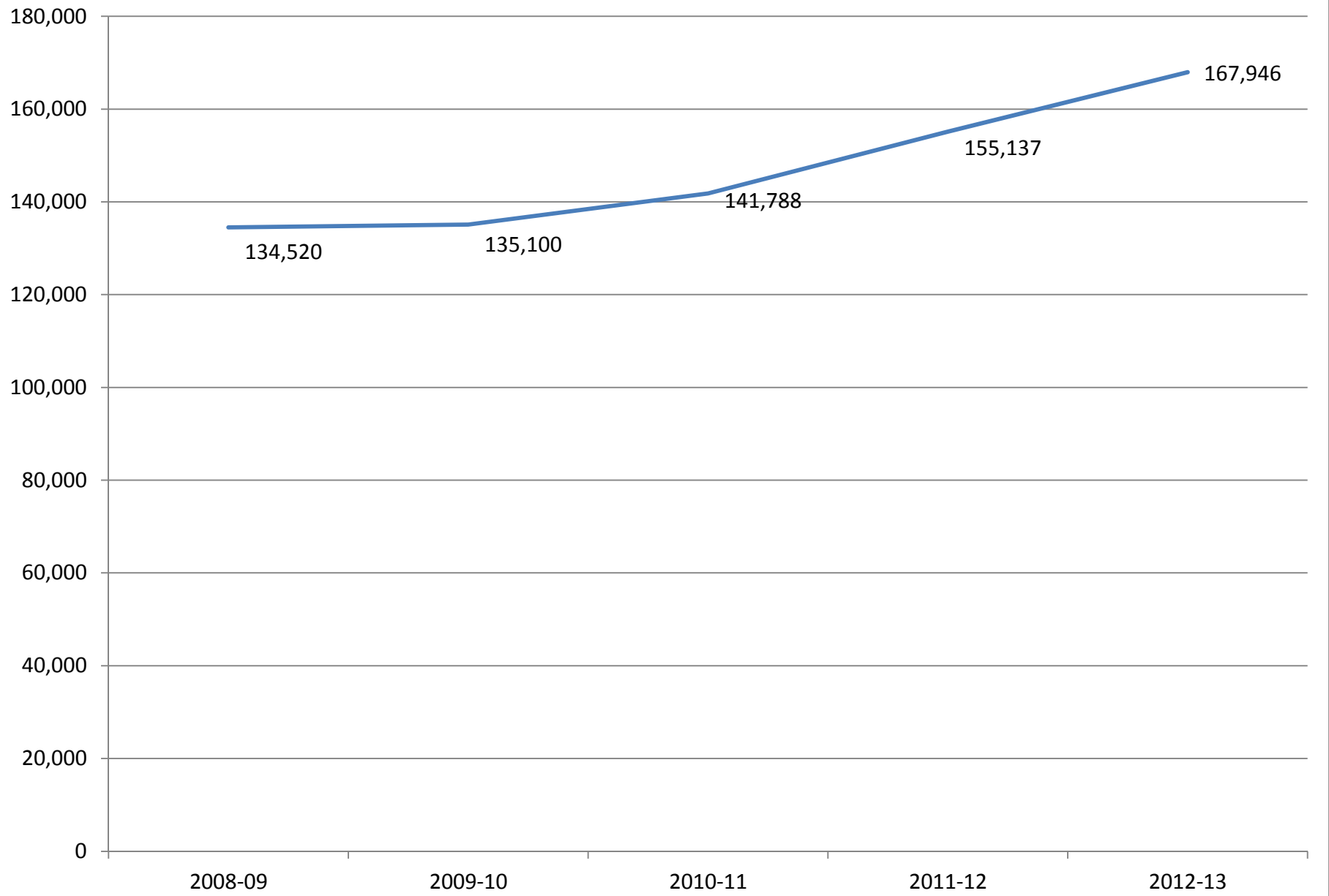
<b>Award Type <sup>a</sup></b>	<b>2008-09</b>	<b>2009-10</b>	<b>2010-11</b>	<b>2011-12</b>	<b>2012-13</b>
Associate in Science for Transfer Degree <sup>b</sup>				72	1,730
Associate in Arts for Transfer Degree <sup>b</sup>				730	3,571
Associate of Science degree	23,262	23,996	25,313	26,742	29,281
Associate of Arts degree	61,686	61,400	60,287	62,566	62,109
Certificate requiring 60+ semester units	1,671	1,682	1,388	1,199	1,035
Certificate requiring 30 to < 60 semester units	15,712	18,535	22,969	25,551	27,320
Certificate requiring 18 to < 30 semester units	9,019	9,852	10,075	11,670	13,501
Certificate requiring 12 to < 18 units	681	699	1,253	2,456	3,080
Certificate requiring 6 to < 18 semester units <sup>c</sup>	14,083	10,653	11,502	11,655	12,809
Other Credit Award, < 6 semester units	5,077	5,140	4,373	3,567	6,101
Career Development and College Preparation	656	1,185	2,164	6,167	4,048
Noncredit Awards	2,673	1,958	2,464	2,762	3,361
<b>Total</b>	<b>134,520</b>	<b>135,100</b>	<b>141,788</b>	<b>155,137</b>	<b>167,946</b>

<sup>a</sup> Data obtained from California Community Colleges Chancellor's Office Data Mart October 2013

<sup>b</sup> Degree first awarded in 2011-12.

<sup>c</sup> Not approved by California Community Colleges Chancellor's Office

**Figure 3. Total Number of Annual Awards By Academic Year**



**Table 4. Top 25 Credit Programs in 2012-13 by Volume of Total Awards<sup>a</sup>**

<b>Program</b>	<b>Total Credit Awards</b>	<b>AA/AS Degrees</b>	<b>All Certificates (Credit)</b>
Liberal Arts and Sciences, General	32,860	18,288	14,572
Biological and Physical Sciences (and Mathematics)	10,119	10,102	17
Humanities	9,185	9,159	26
Social Sciences, General	8,349	8,348	1
Child Development/Early Care and Education	7,577	2,240	5,337
Nursing	7,154	5,432	1,722
Administration of Justice	6,164	3,350	2,814
Business Administration	4,952	4,325	627
Psychology, General	3,214	3,207	7
Accounting	3,064	1,454	1,610
Automotive Technology	3,059	363	2,696
Fire Technology	2,859	1,055	1,804
Business and Commerce, General	2,117	1,910	207
Business Management	2,024	1,109	915
Human Services	1,812	647	1,165
Cosmetology and Barbering	1,641	109	1,532
Office Technology/Office Computer Applications	1,635	505	1,130
Other Interdisciplinary Studies	1,631	1,595	36
Electronics and Electric Technology	1,572	352	1,220
Nutrition, Foods, and Culinary Arts	1,508	389	1,119
Biology, General	1,432	1,426	6
Speech Communication	1,369	1,183	186
Manufacturing and Industrial Technology	1,288	206	1,082
Sociology	1,208	1,198	10
Medical Assisting	1,145	264	881

<sup>a</sup>Data obtained from the California Community Colleges Chancellor's Office Data Mart October 2013

**Table 5. Systemwide Participation Rate per 1,000 Population<sup>a,b,c,d</sup>**

<b>Academic Year</b>	<b>2008-09</b>	<b>2009-10</b>	<b>2010-11</b>	<b>2011-12</b>	<b>2012-13</b>
	89.4	84.2	82.5	78.2	74.6

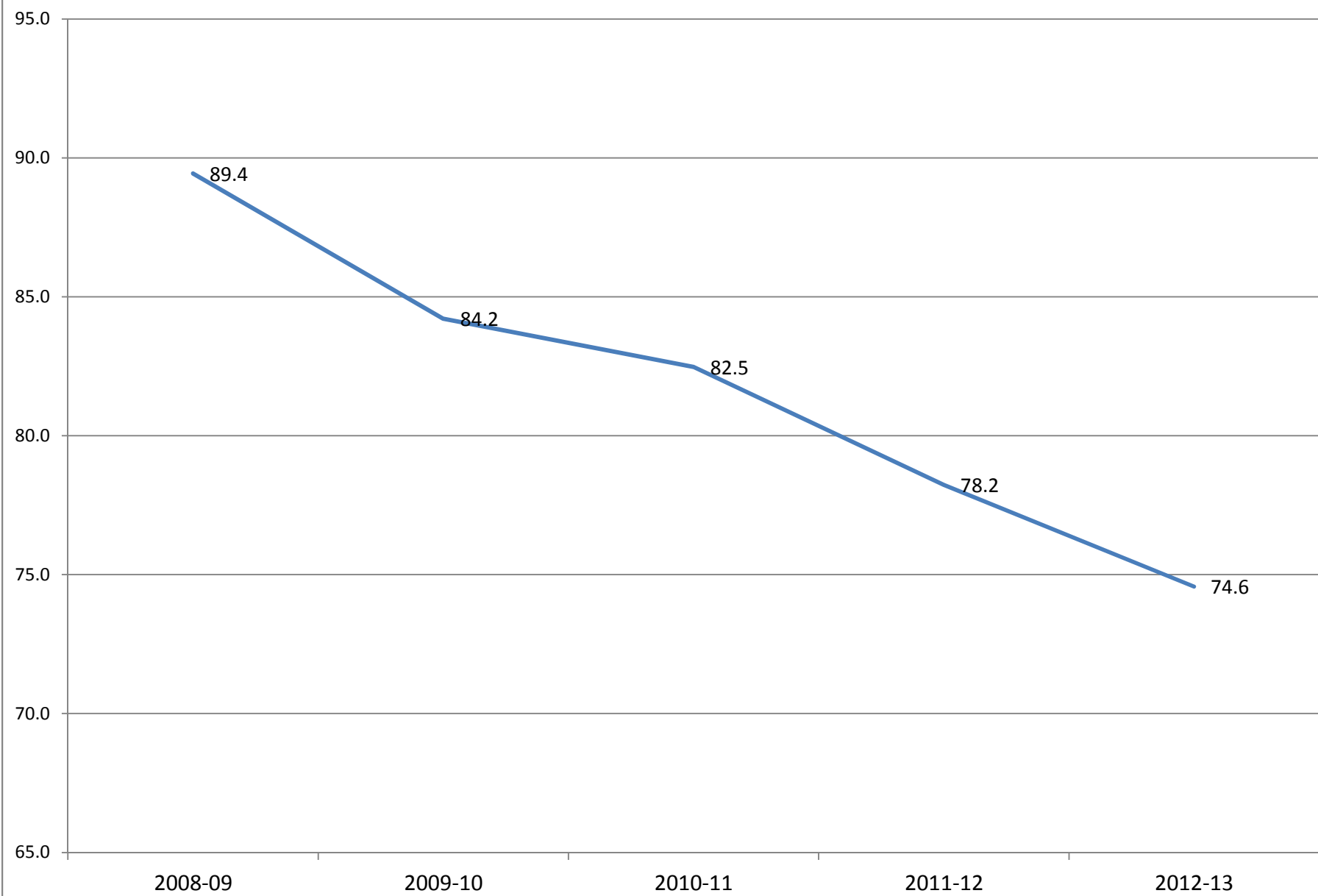
<sup>a</sup>California residents 18 years through 70 years of age.

<sup>b</sup>Student Enrollment, COMIS, California Community College Chancellor's Office

<sup>c</sup>California Population 2008-2010, Intercensal\_2000\_2010, California State Department of Finance, Demographic Research Unit (DRU)

<sup>d</sup>California Population 2011-2013, P-3\_CAProj\_STCO, California State Department of Finance, Demographic Research Unit (DRU)

**Figure 5. Systemwide Participation Rate Per 1,000 Population**



**Table 6. Participation Rate by Gender per 1,000 Population<sup>a,b,c,d</sup>**

<b>Gender</b>	<b>2008-09</b>	<b>2009-10</b>	<b>2010-11</b>	<b>2011-12</b>	<b>2012-13</b>
Female	97.2	90.9	88.7	83.7	79.6
Male	81.7	77.5	77.3	72.7	69.5

<sup>a</sup>California residents 18 years through 70 years of age

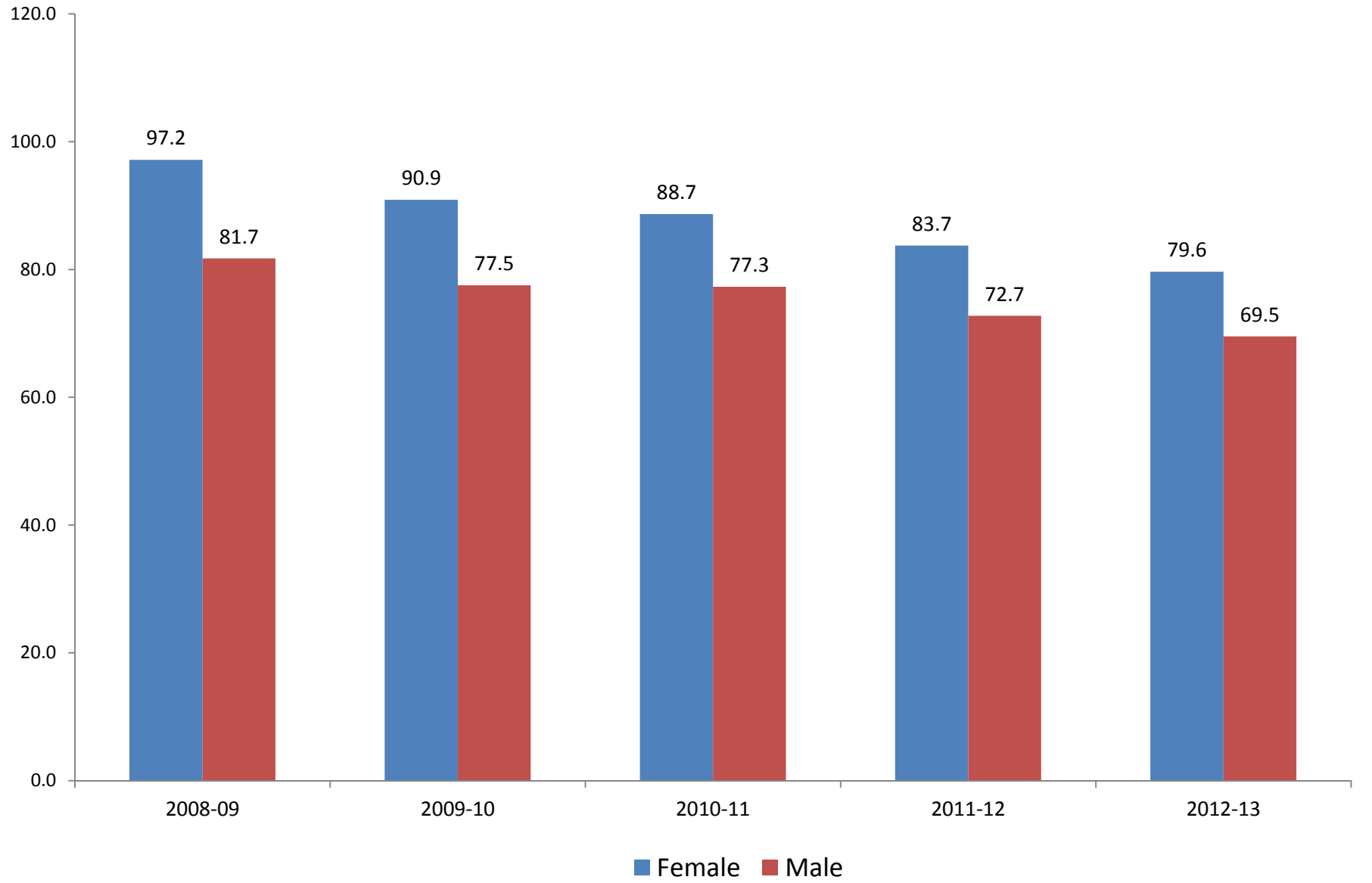
<sup>b</sup>Student Enrollment, COMIS, California Community College Chancellor's Office

<sup>c</sup>California Population 2008-2010, Intercensal\_2000\_2010, California State Department of Finance, Demographic Research Unit (DRU)

<sup>d</sup>California Population 2011-2013, P-3\_CAProj\_STCO, California State Department of Finance, Demographic Research Unit (DRU)



**Figure 6. Participation Rate Per 1,000 Population By Gender  
2008-09 through 2101-13**



**Table 7. Participation Rate by Age Group per 1,000 Population<sup>a,b,c,d</sup>**

<b>AGE</b>	<b>2008-09</b>	<b>2009-10</b>	<b>2010-11</b>	<b>2011-12</b>	<b>2012-13</b>
18 AND 19	368.0	350.7	339.3	320.2	309.3
20 TO 24	243.4	244.0	249.2	244.0	240.2
25 TO 29	119.4	112.7	112.2	105.8	103.0
30 TO 34	77.0	72.2	71.2	66.4	62.0
35 TO 39	58.0	52.8	51.0	47.8	44.1
40 TO 49	44.8	40.8	39.0	35.7	32.3
50 TO 59	32.7	28.1	26.1	23.3	21.0
60 TO 70	24.4	19.5	17.2	15.2	13.4

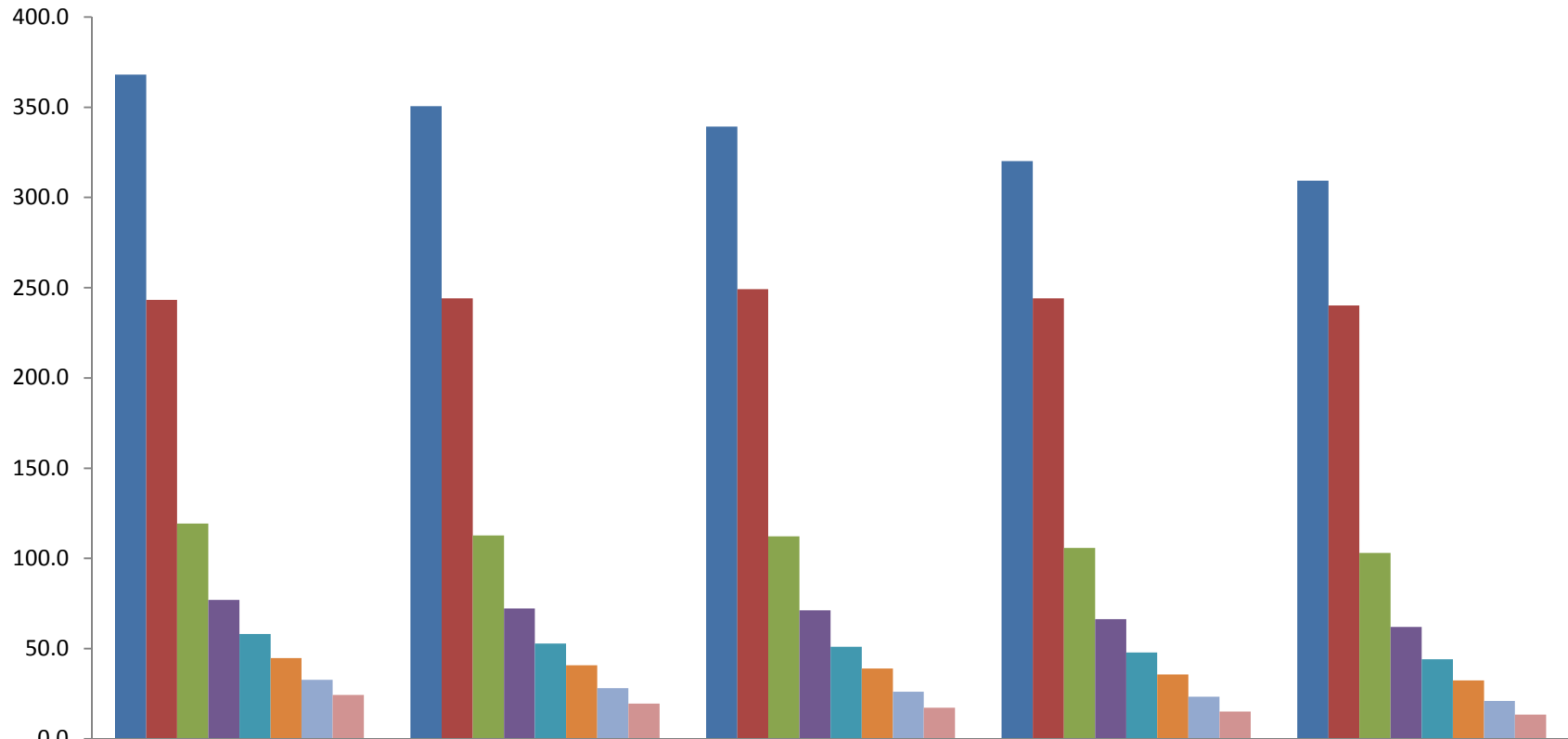
<sup>a</sup>California residents 18 years through 70 years of age

<sup>b</sup>Student Enrollment, COMIS, California Community College Chancellor's Office

<sup>c</sup>California Population 2008-2010, Intercensal\_2000\_2010, California State Department of Finance, Demographic Research Unit (DRU)

<sup>d</sup>California Population 2011-2013, P-3\_CAProj\_STCO, California State Department of Finance, Demographic Research Unit (DRU)

**Figure 7. Participation Rate Per 1,000 Population By Age Group  
2008-09 Through 2012-13**



	2008-09	2009-10	2010-11	2011-12	2012-13
■ 18 AND 19	368.0	350.7	339.3	320.2	309.3
■ 20 TO 24	243.4	244.0	249.2	244.0	240.2
■ 25 TO 29	119.4	112.7	112.2	105.8	103.0
■ 30 TO 34	77.0	72.2	71.2	66.4	62.0
■ 35 TO 39	58.0	52.8	51.0	47.8	44.1
■ 40 TO 49	44.8	40.8	39.0	35.7	32.3
■ 50 TO 59	32.7	28.1	26.1	23.3	21.0
■ 60 TO 70	24.4	19.5	17.2	15.2	13.4

**Table 8. Participation Rate by Race/Ethnicity per 1,000 Population<sup>a,b,c,d</sup>**

<b>Race/Ethnicity</b>	<b>2008-09</b>	<b>2009-10</b>	<b>2010-11</b>	<b>2011-12</b>	<b>2012-13</b>
African American	126.7	116.6	114.3	105.9	96.4
American Indian	185.1	139.7	120.5	102.1	86.0
Asian	108.6	97.9	90.3	83.6	78.0
Hispanic	93.2	88.7	90.1	87.5	86.6
Multi-Race	2.0	66.3	99.8	114.0	120.9
Pacific Islander	226.2	173.6	143.0	122.4	106.7
White	77.1	71.2	68.5	62.3	57.1

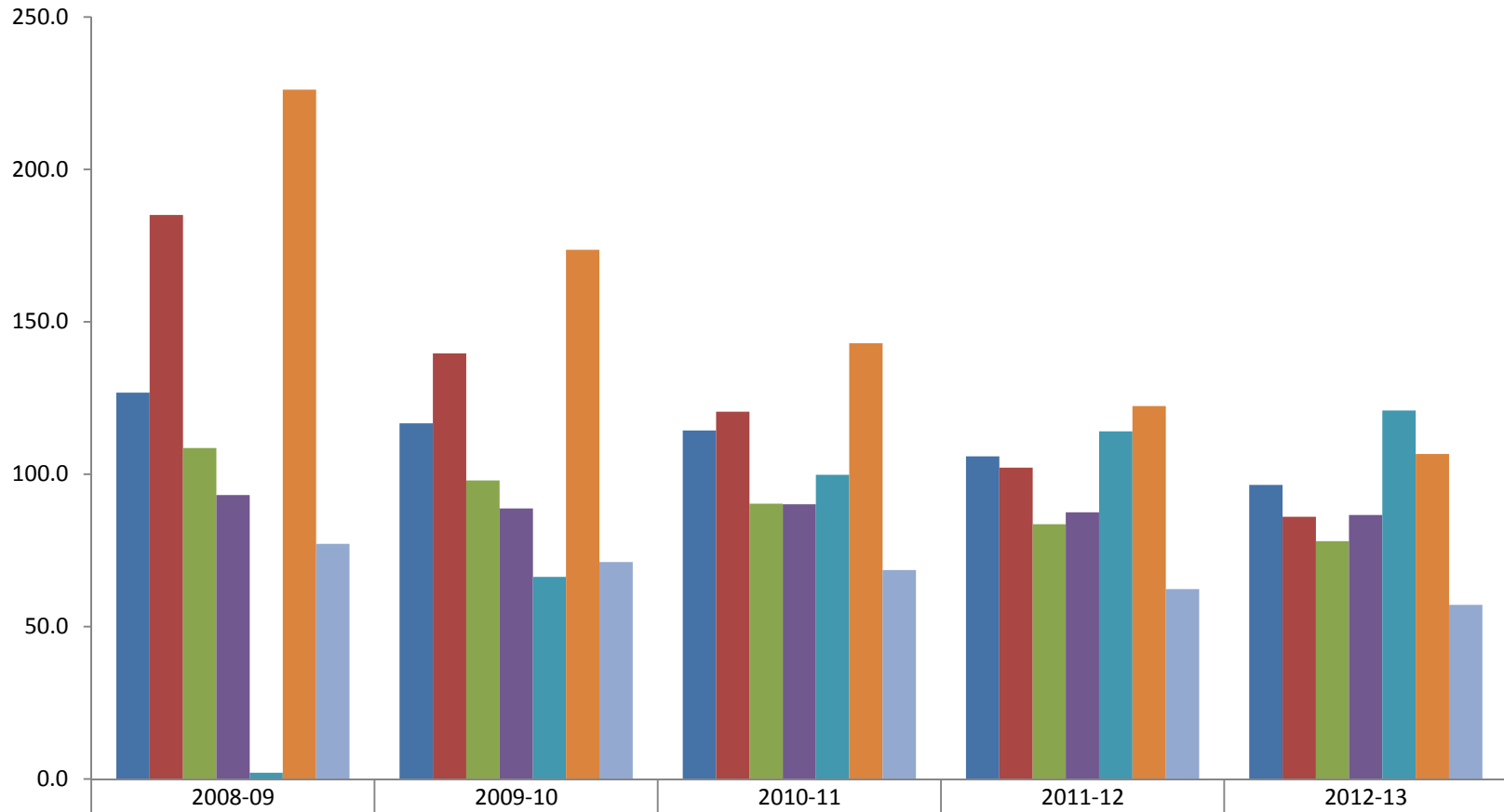
<sup>a</sup>California residents 18 years through 70 years of age

<sup>b</sup>Student Enrollment, COMIS, California Community College Chancellor's Office

<sup>c</sup>California Population 2008-2010, Intercensal\_2000\_2010, California State Department of Finance, Demographic Research Unit (DRU)

<sup>d</sup>California Population 2011-2013, P-3\_CAProj\_STCO, California State Department of Finance, Demographic Research Unit (DRU)

**Figure 8. Participation Rate Per 1,000 Population By Race/Ethnicity  
2008-09 Through 2012-13**



	2008-09	2009-10	2010-11	2011-12	2012-13
■ African American	126.7	116.6	114.3	105.9	96.4
■ American Indian	185.1	139.7	120.5	102.1	86.0
■ Asian	108.6	97.9	90.3	83.6	78.0
■ Hispanic	93.2	88.7	90.1	87.5	86.6
■ Multi-Race	2.0	66.3	99.8	114.0	120.9
■ Pacific Islander	226.2	173.6	143.0	122.4	106.7
■ White	77.1	71.2	68.5	62.3	57.1

**Table 9. Scorecard Metrics <sup>a</sup>**

<b>Metric</b>	<b>2002-03</b>	<b>2003-04</b>	<b>2004-05</b>	<b>2005-06</b>	<b>2006-07</b>
<b>Completion Rate</b>					
Overall	52.3%	51.3%	51.3%	50.8%	49.2%
Prepared	72.4%	72.2%	71.8%	72.1%	71.2%
Unprepared	45.0%	43.9%	43.9%	43.0%	41.1%
<b>Three-term Persistence Rate</b>					
Overall	63.6%	67.8%	66.5%	66.0%	65.8%
Prepared	58.2%	64.4%	62.8%	62.2%	62.2%
Unprepared	65.7%	69.1%	68.0%	67.5%	67.3%
<b>30-Units Completion Rate</b>					
Overall	63.6%	65.1%	65.0%	66.0%	66.4%
Prepared	66.6%	69.6%	68.9%	69.6%	70.1%
Unprepared	62.6%	63.5%	63.6%	64.7%	65.1%
<b>Career Technical Education (CTE)</b>					
CTE rate	52.0%	54.2%	54.3%	54.4%	55.0%
<b>Remedial</b>					
English	35.6%	36.5%	36.8%	37.2%	38.1%
Math	23.1%	23.6%	24.1%	24.7%	25.9%
ESL	22.3%	21.3%	22.2%	22.8%	23.6%
<b>Career Development and College Preparation (CDCP)<sup>b</sup></b>					
CDCP Rate					12.4%

<sup>a</sup> California Community College Chancellor's Office 2013 Scorecard Statewide Five-Year Report

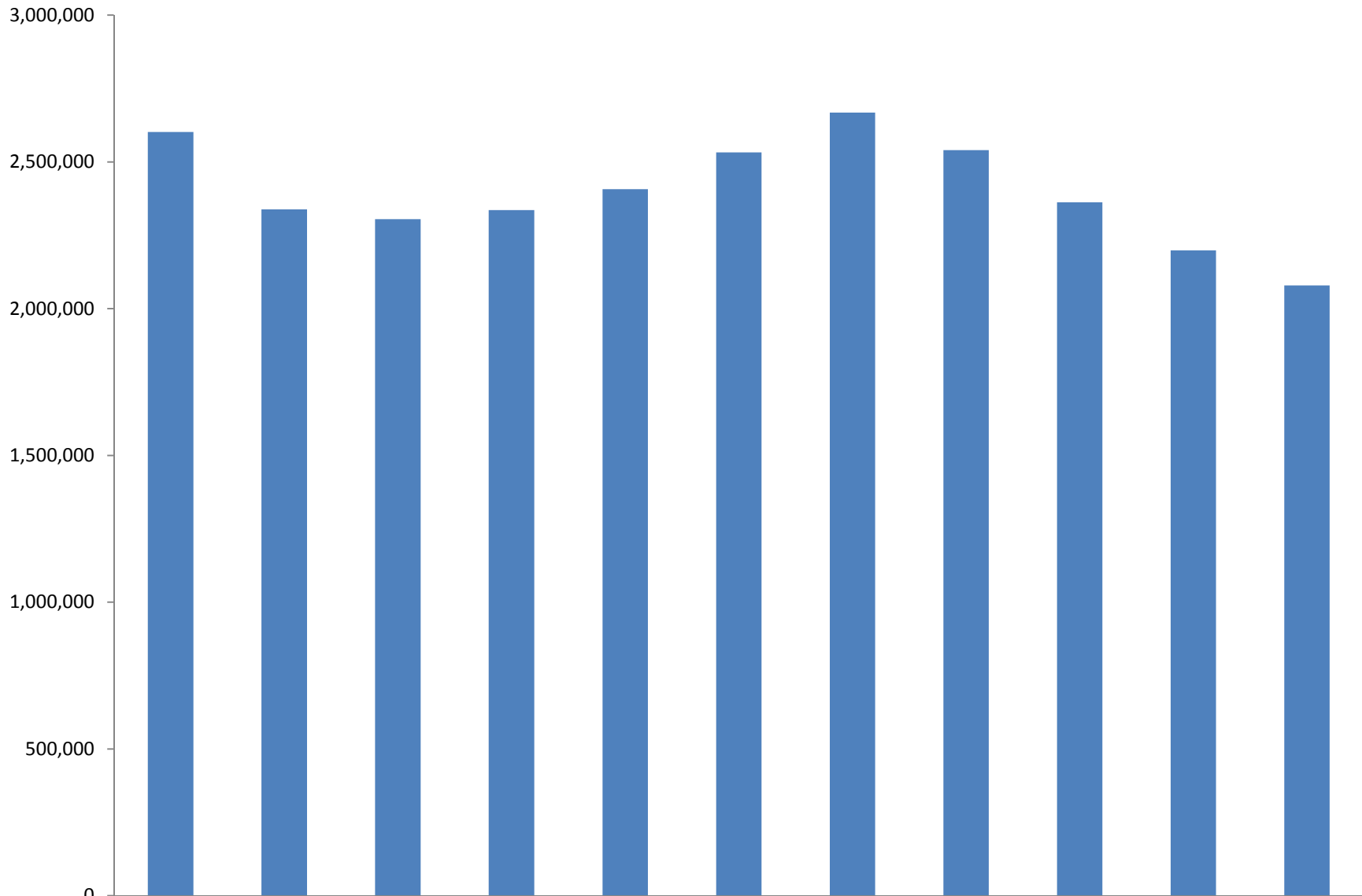
<sup>b</sup> CDCP percentage not available before 2006-07 cohort due to six-year outcome measurement period.

**Table 10. Annual Student Headcounts\***

<b>Year</b>	<b>Headcount</b>	<b>Change</b>	<b>Percent Change</b>
2002-03	2,602,037		
2003-04	2,338,147	-263,890	-10.1%
2004-05	2,304,787	-33,360	-1.4%
2005-06	2,335,788	31,001	1.3%
2006-07	2,407,194	71,406	3.1%
2007-08	2,532,620	125,426	5.2%
2008-09	2,667,666	135,046	5.3%
2009-10	2,539,776	-127,890	-4.8%
2010-11	2,362,293	-177,483	-7.0%
2011-12	2,198,910	-163,383	-6.9%
2012-13	2,079,229	-119,681	-5.4%

\* Data obtained from COMIS November 2013

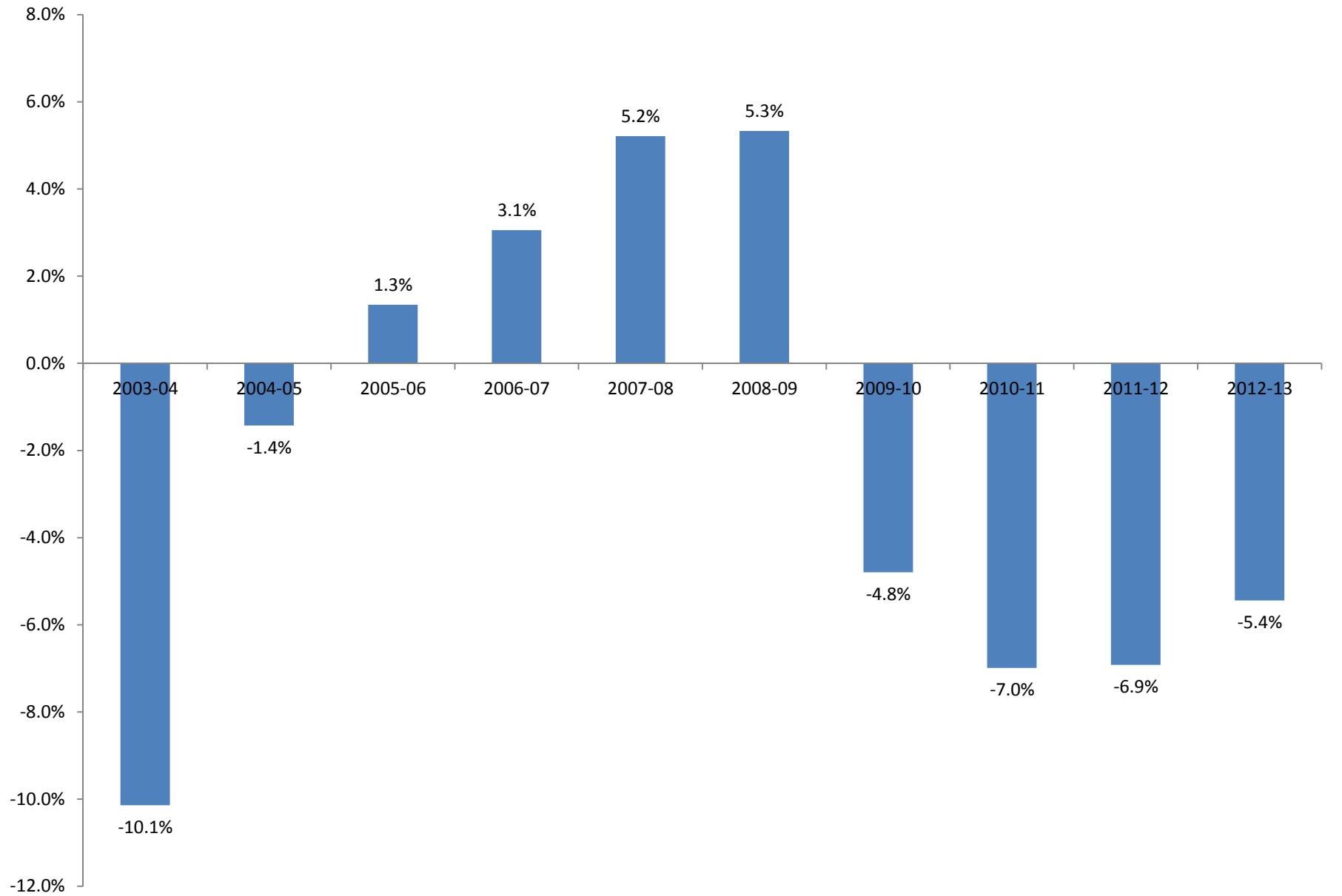
**Figure 10a. Annual Statewide Headcount By Academic Year**



■ Headcount	2,602,037	2,338,147	2,304,787	2,335,788	2,407,194	2,532,620	2,667,666	2,539,776	2,362,293	2,198,910	2,079,229
-------------	-----------	-----------	-----------	-----------	-----------	-----------	-----------	-----------	-----------	-----------	-----------



**Figure 10b. Statewide Headcount Percent Change By Academic Year**

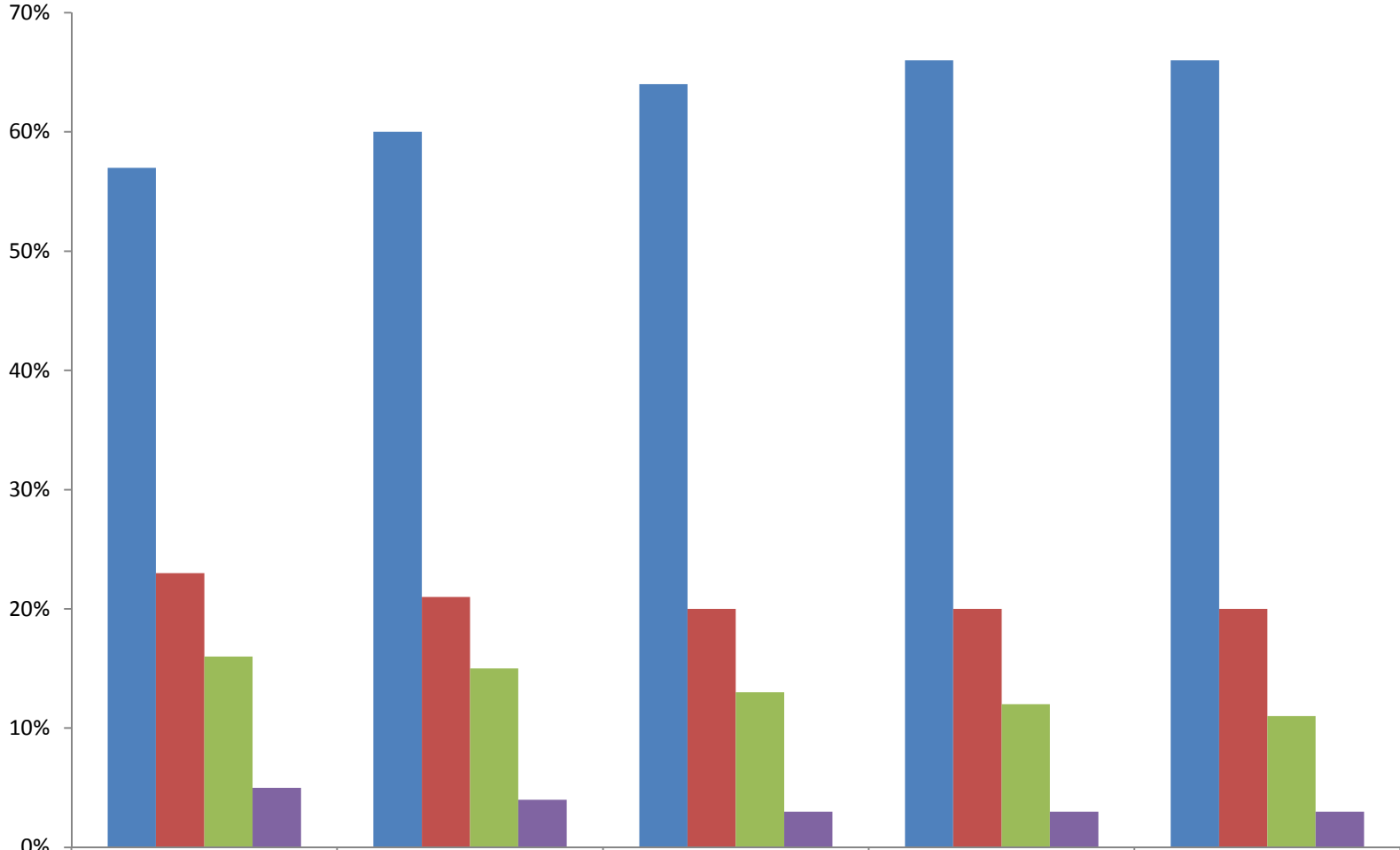


**Table 11. Distribution of Enrollment Status\***

<b>Enrollment Status</b>	<b>2008-09</b>	<b>2009-10</b>	<b>2010-11</b>	<b>2011-12</b>	<b>2012-13</b>
Continuing	57%	60%	64%	66%	66%
First-Time Transfer	23%	21%	20%	20%	20%
Returning	16%	15%	13%	12%	11%
K-12/Special Admit	5%	4%	3%	3%	3%

\* Data obtained from California Community Colleges Chancellor's Office Data Mart August 2013

**Figure 11. Enrollment Type Percentages  
2008-09 Through 2012-13**



	2008-09	2009-10	2010-11	2011-12	2012-13
Continuing	57%	60%	64%	66%	66%
First-Time Transfer	23%	21%	20%	20%	20%
Returning	16%	15%	13%	12%	11%
K-12/Special Admit	5%	4%	3%	3%	3%

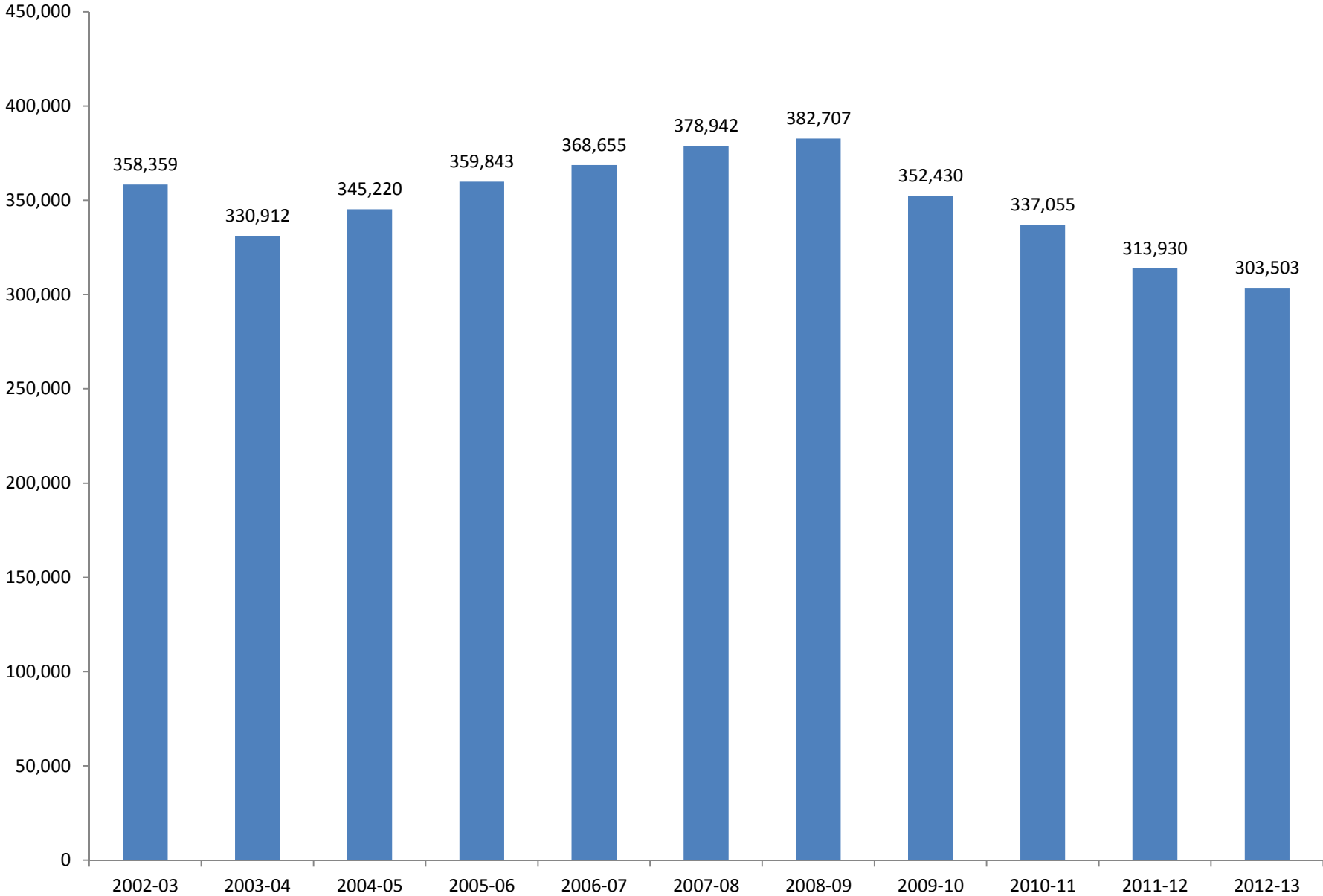
**Table 12. Sections Offered By Academic Year**

Year <sup>a</sup>	Sections Offered <sup>b</sup>					
	Credit	Percent Change Credit	Noncredit	Percent Change Noncredit	Total	Percent Change Total
2002-03	358,359		38,739		397,098	
2003-04	330,912	-7.7%	33,528	-13.5%	364,440	-8.2%
2004-05	345,220	4.3%	34,593	3.2%	379,813	4.2%
2005-06	359,843	4.2%	37,269	7.7%	397,112	4.6%
2006-07	368,655	2.4%	38,854	4.3%	407,509	2.6%
2007-08	378,942	2.8%	42,101	8.4%	421,043	3.3%
2008-09	382,707	1.0%	42,918	1.9%	425,625	1.1%
2009-10	352,430	-7.9%	35,580	-17.1%	388,010	-8.8%
2010-11	337,055	-4.4%	29,739	-16.4%	366,794	-5.5%
2011-12	313,930	-6.9%	27,994	-5.9%	341,924	-6.8%
2012-13	303,503	-3.3%	25,601	-8.5%	329,104	-3.7%

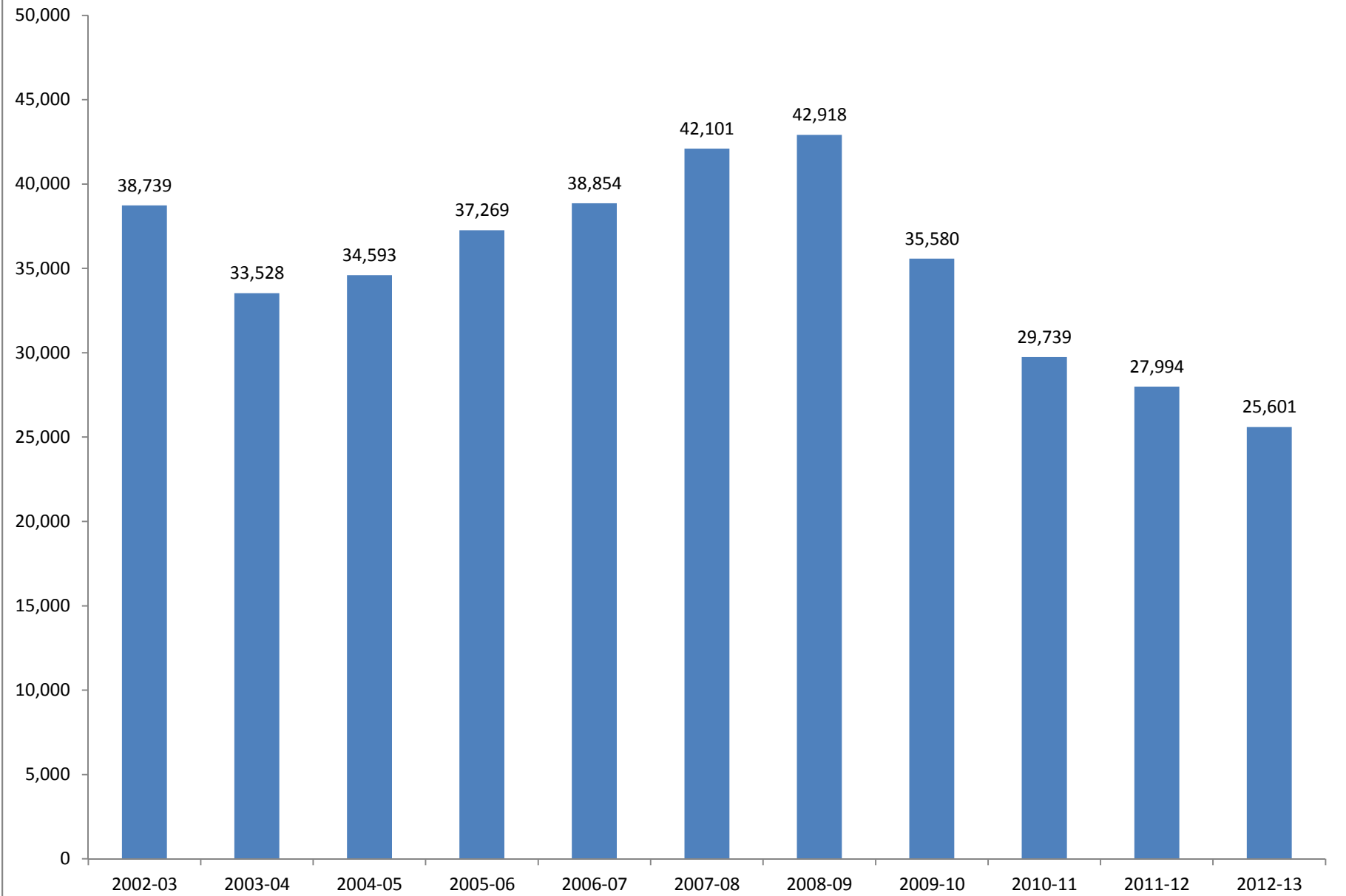
<sup>a</sup> Academic Year includes four semesters: Summer, Fall, Winter, and Spring.

<sup>b</sup> Data obtained from California Community Colleges Chancellor's Office Datamart September 2013.

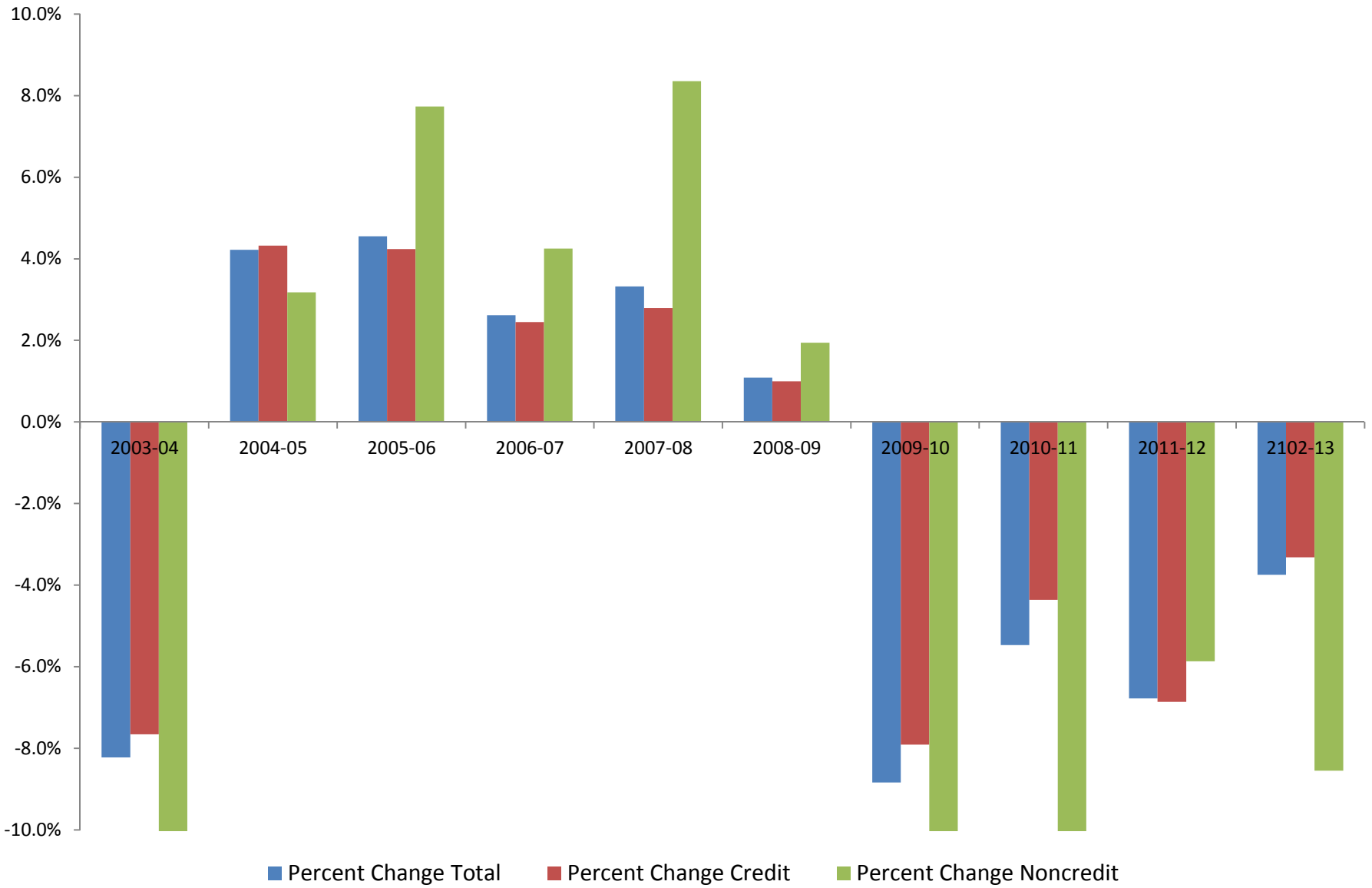
**Figure 12a. Credit Sections**



**Figure 12b. Noncredit Sections**



**Figure 12c. Percent Change In Sections Offered  
2008-09 Through 2012-13**



**Table 13. Median Section Size<sup>a,b</sup>**

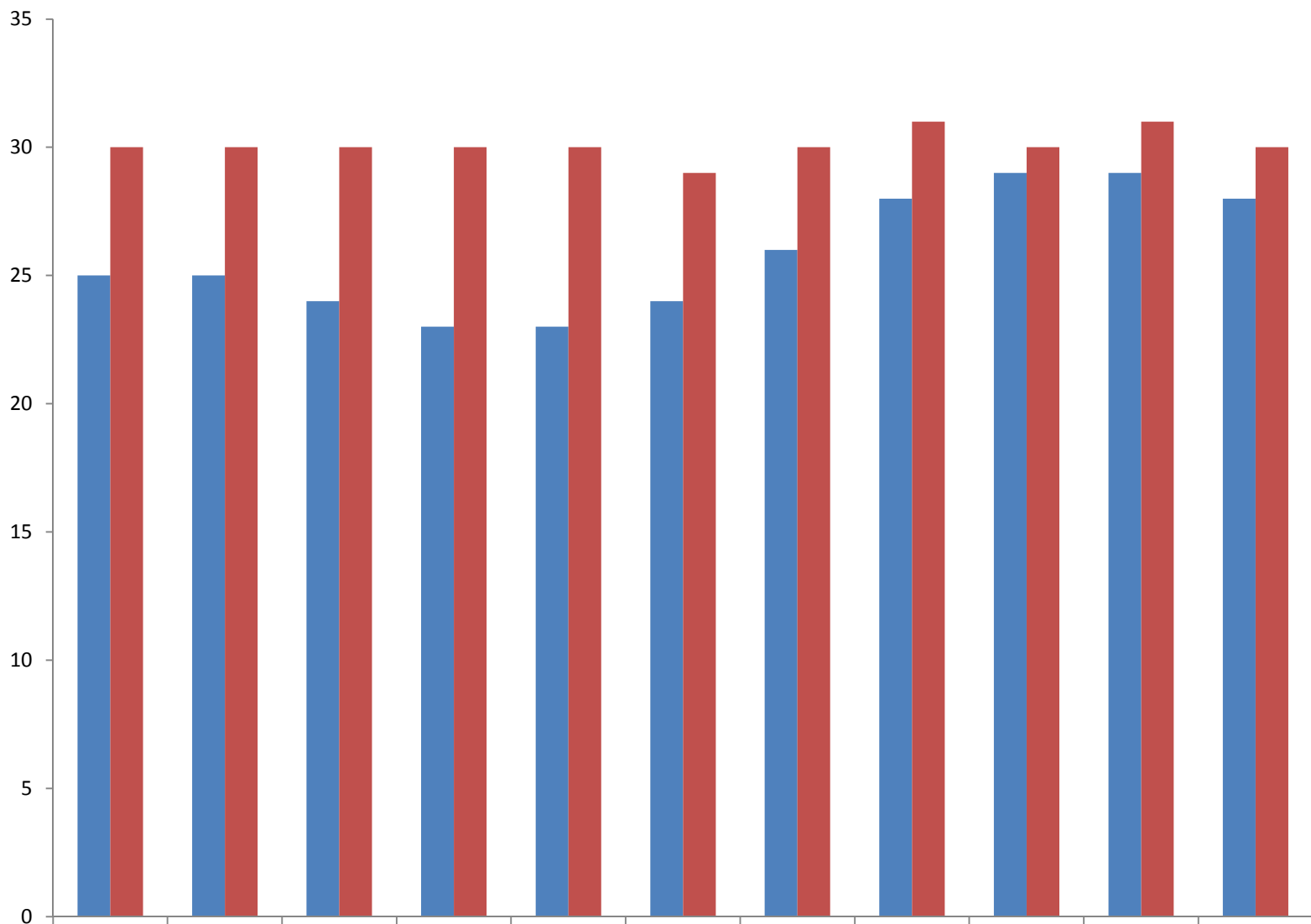
<b>Year</b>	<b>Credit Sections</b>	<b>Noncredit Sections</b>
2002-03	25	30
2003-04	25	30
2004-05	24	30
2005-06	23	30
2006-07	23	30
2007-08	24	29
2008-09	26	30
2009-10	28	31
2010-11	29	30
2011-12	29	31
2012-13	28	30

<sup>a</sup>Includes Winter and Spring terms.

<sup>b</sup>Data obtained from COMIS database.



**Figure 13. Median Credit and Noncredit Section Size**



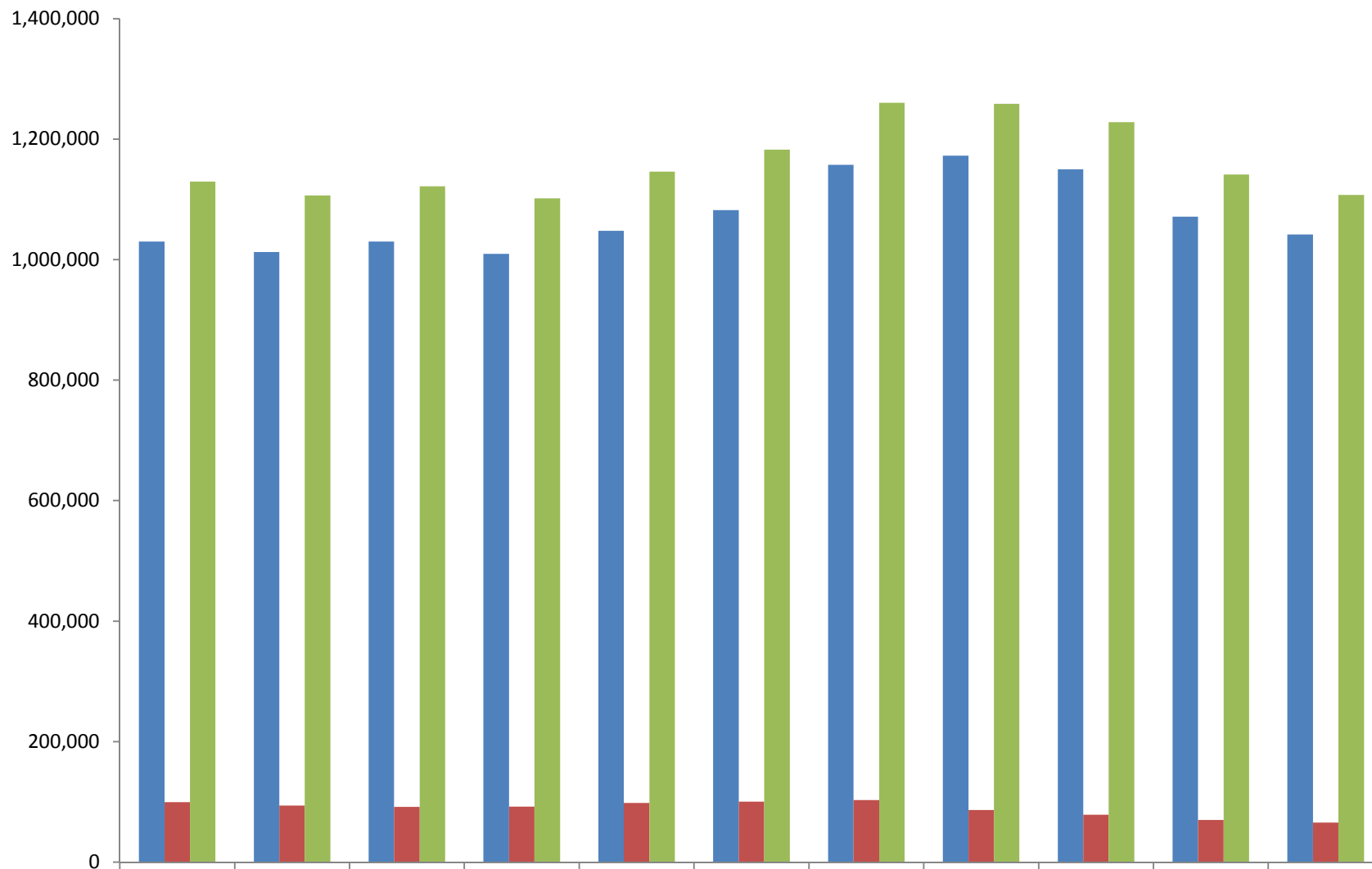
■ Credit Sections	25	25	24	23	23	24	26	28	29	29	28
■ Noncredit Sections	30	30	30	30	30	29	30	31	30	31	30

**Table 14. Annual Full-Time Equivalent Students <sup>a</sup>**

<b>Year</b>	<b>Credit FTES</b>	<b>Percent Change Credit FTES</b>	<b>Noncredit FTES</b>	<b>Percent Change Noncredit FTES</b>	<b>Total FTES</b>	<b>Percent Change</b>
2002-03	1,030,048		99,596		1,129,644	
2003-04	1,012,605	-1.7%	93,785	-5.8%	1,106,390	-2.1%
2004-05	1,029,797	1.7%	91,884	-2.0%	1,121,681	1.4%
2005-06	1,009,633	-2.0%	92,272	0.4%	1,101,904	-1.8%
2006-07	1,047,897	3.8%	98,266	6.5%	1,146,163	4.0%
2007-08	1,082,195	3.3%	100,363	2.1%	1,182,558	3.2%
2008-09	1,157,420	7.0%	103,078	2.7%	1,260,498	6.6%
2009-10	1,172,455	1.3%	86,264	-16.3%	1,258,719	-0.1%
2010-11	1,149,841	-1.9%	78,508	-9.0%	1,228,349	-2.4%
2011-12	1,071,337	-6.8%	69,961	-10.9%	1,141,298	-7.1%
2012-13	1,041,782	-2.8%	65,659	-6.1%	1,107,441	-3.0%

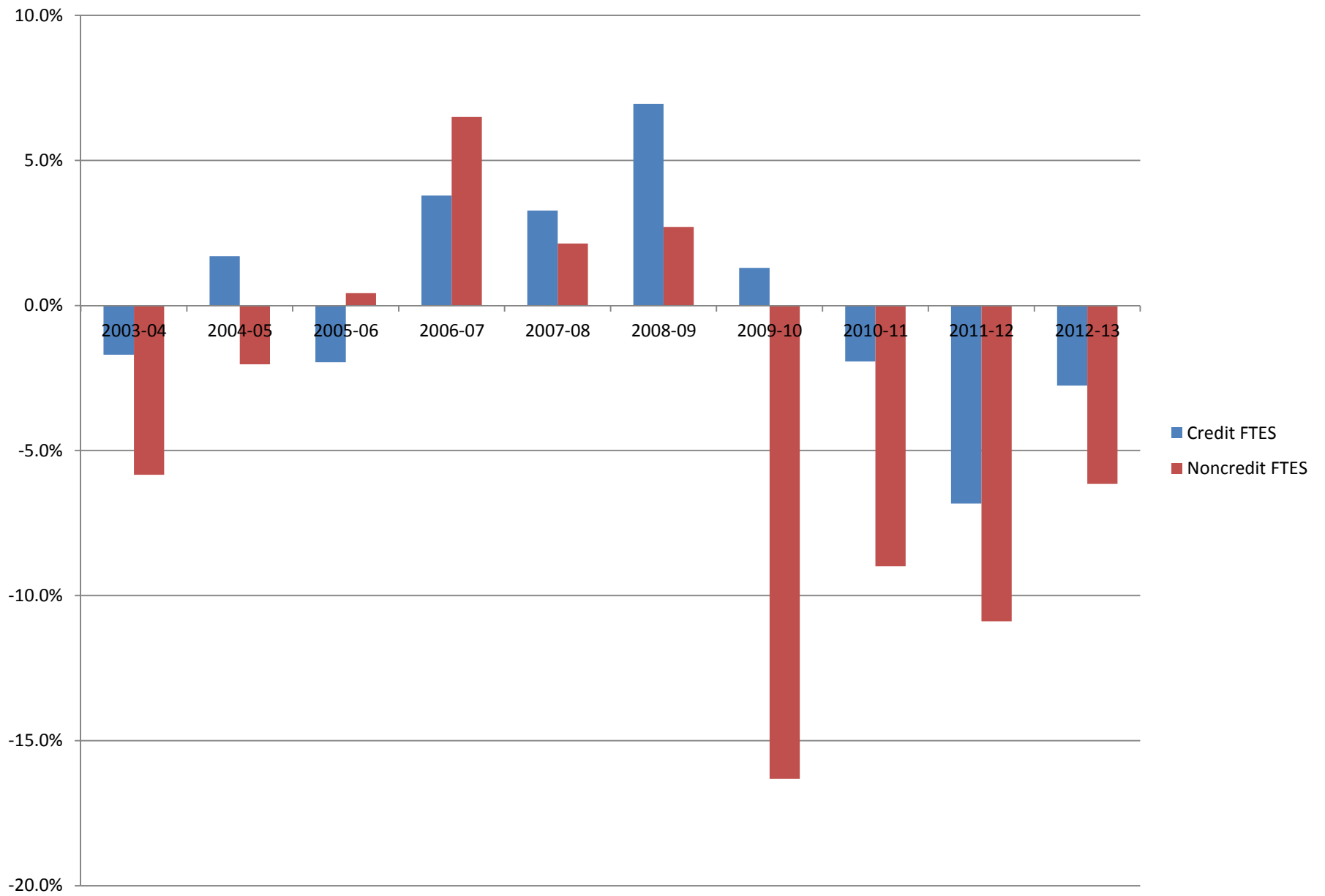
<sup>a</sup> California Community Colleges Chancellor's Office  
College Finance and Facilities Planning Division

**Figure 14a. Total, Credit and Noncredit Full-Time Equivalent Students**



	2002-03	2003-04	2004-05	2005-06	2006-07	2007-08	2008-09	2009-10	2010-11	2011-12	2012-13
■ Credit FTES	1,030,048	1,012,605	1,029,797	1,009,633	1,047,897	1,082,195	1,157,420	1,172,455	1,149,841	1,071,337	1,041,782
■ Noncredit FTES	99,596	93,785	91,884	92,272	98,266	100,363	103,078	86,264	78,508	69,961	65,659
■ Total FTES	1,129,644	1,106,390	1,121,681	1,101,904	1,146,163	1,182,558	1,260,498	1,258,719	1,228,349	1,141,298	1,107,441

**Figure 14b. Percent Change For Credit and Noncredit Full-Time Equivalent Students**



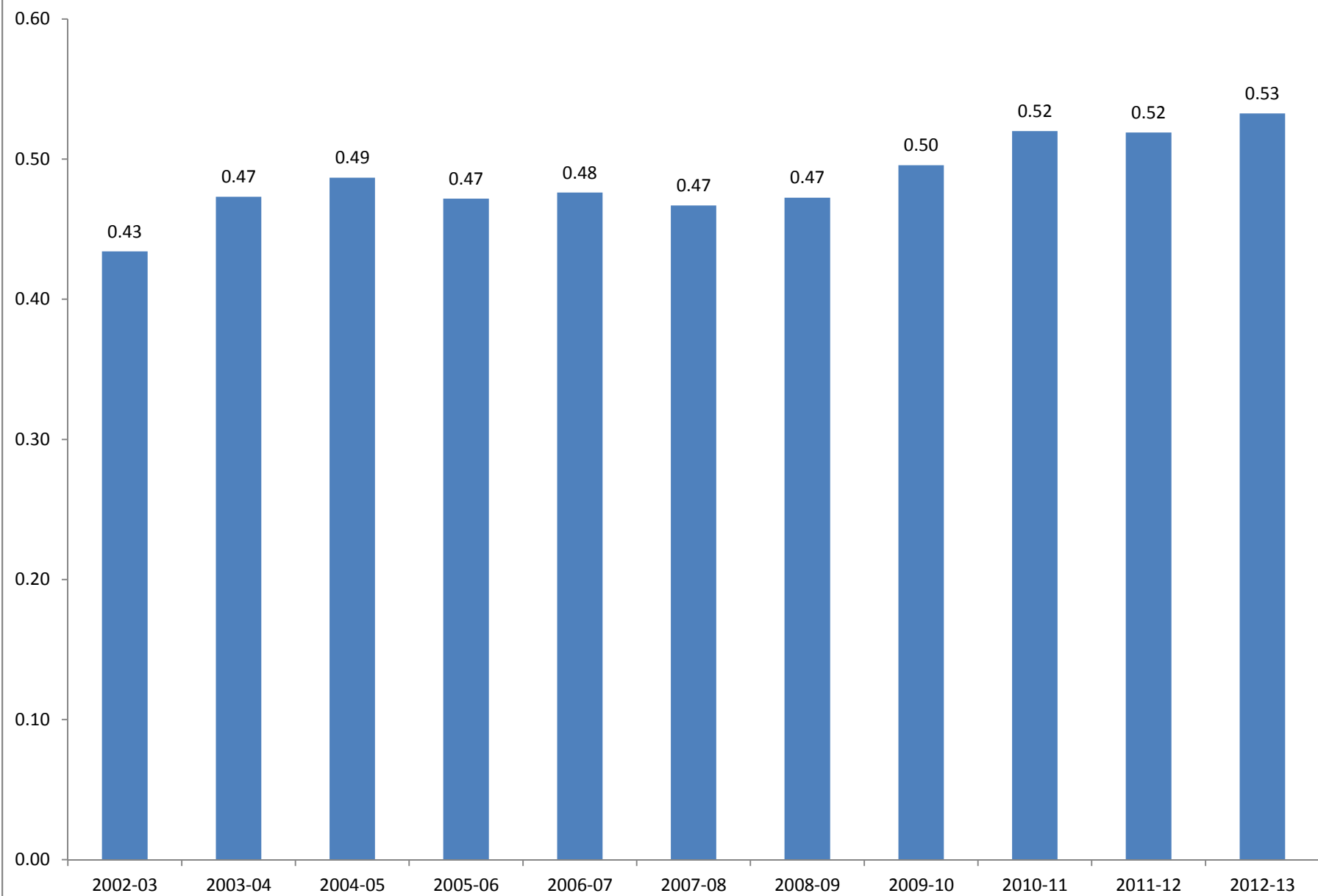
**Table 15. Average FTES Generated By Headcount**

<b>Academic Year</b>	<b>Total FTES <sup>a</sup></b>	<b>Headcount <sup>b</sup></b>	<b>Average FTES Generated By Headcount</b>
2002-03	1,129,644	2,602,037	0.43
2003-04	1,106,390	2,338,147	0.47
2004-05	1,121,681	2,304,787	0.49
2005-06	1,101,904	2,335,788	0.47
2006-07	1,146,163	2,407,194	0.48
2007-08	1,182,558	2,532,620	0.47
2008-09	1,260,498	2,667,666	0.47
2009-10	1,258,719	2,539,776	0.50
2010-11	1,228,349	2,362,293	0.52
2011-12	1,141,298	2,198,910	0.52
2012-13	1,107,441	2,079,229	0.53

<sup>a</sup> California Community Colleges Chancellor's Office  
College Finance and Facilities Planning Division

<sup>b</sup> Data obtained from CCCCO Data Mart October 2013

**Figure 15. Average FTES Generated By Headcount**

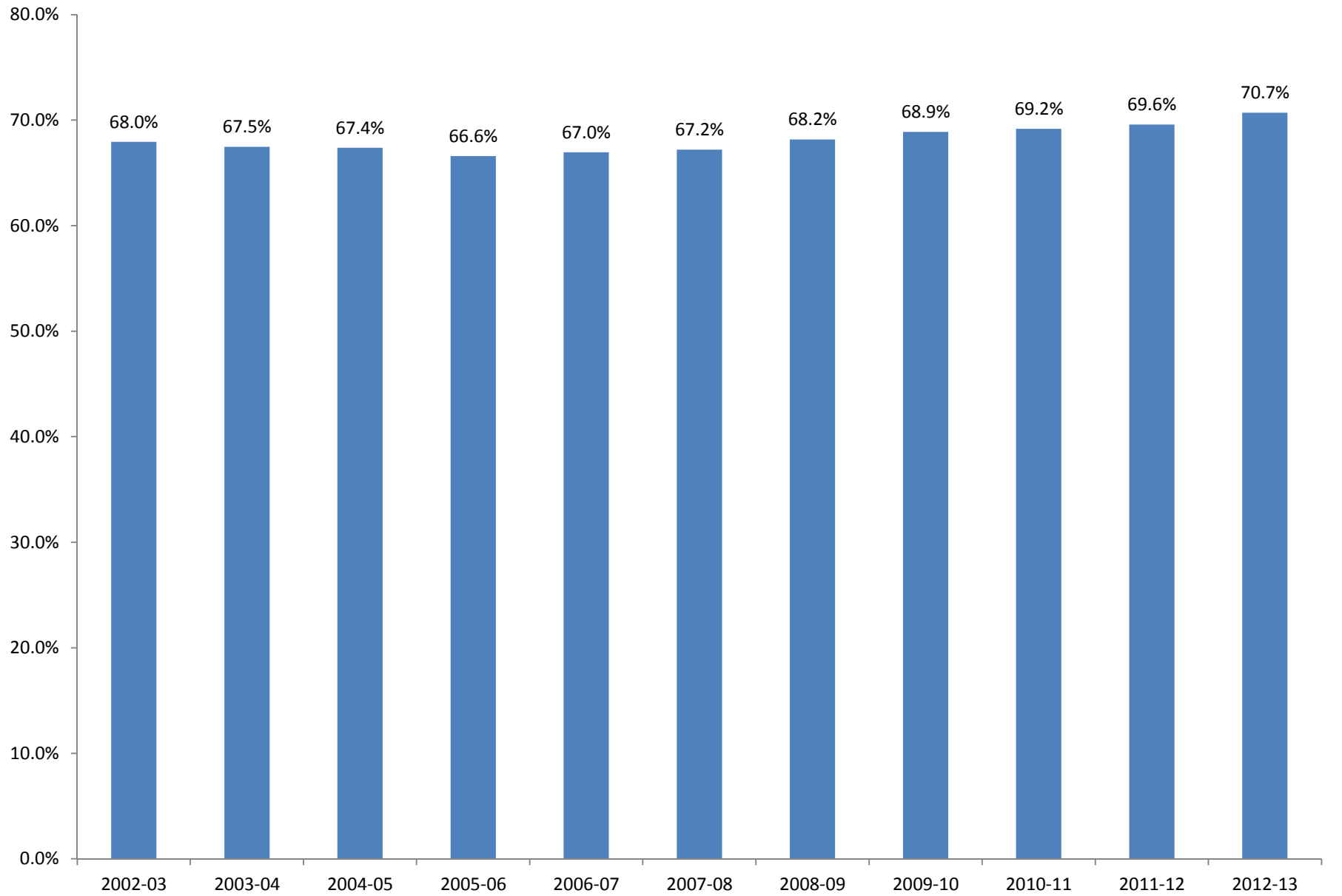


**Table 16. Credit Course Success Rate by Type\***

<b>Year</b>	<b>All Credit</b>	<b>Basic Skills</b>	<b>Degree Applicable</b>	<b>Transferable</b>	<b>Career Technical Ed</b>
2002-03	68.0%	59.4%	68.5%	68.2%	72.4%
2003-04	67.5%	59.5%	68.0%	67.8%	72.4%
2004-05	67.4%	59.1%	67.9%	67.7%	72.4%
2005-06	66.6%	58.3%	67.1%	66.8%	71.8%
2006-07	67.0%	58.6%	67.4%	66.9%	72.7%
2007-08	67.2%	59.0%	67.6%	67.0%	73.0%
2008-09	68.2%	60.2%	68.6%	68.1%	73.7%
2009-10	68.9%	61.2%	69.4%	69.0%	73.8%
2010-11	69.2%	62.1%	69.6%	69.3%	73.9%
2011-12	69.6%	63.0%	70.0%	70.0%	73.8%
2012-13	70.7%	63.9%	71.1%	71.2%	74.9%

\*Data obtained from California Community Colleges Chancellor's Office Data Mart August 2013

**Figure 16. All Credit Classes Success Rate**







California Community Colleges Chancellor's Office  
1102 Q Street, Suite 4554  
Sacramento, CA 95811

[californiacommunitycolleges.cccco.edu](http://californiacommunitycolleges.cccco.edu)