

Presentation to the Board of Governors California Community Colleges

September 12, 2011

Dan Troy, Vice Chancellor, College Finance and Facilities
Planning

Patrick Perry, Vice Chancellor, Technology, Research and
Information Systems



Recent Cuts to CCC Budget

2009-10:

- More than \$500 million cut from the community college budget (\$190 million general apportionment & \$313 million categorical)
- Student fees raised from \$20 to \$26 per unit

2010-11:

- \$126 million received for enrollment “growth”

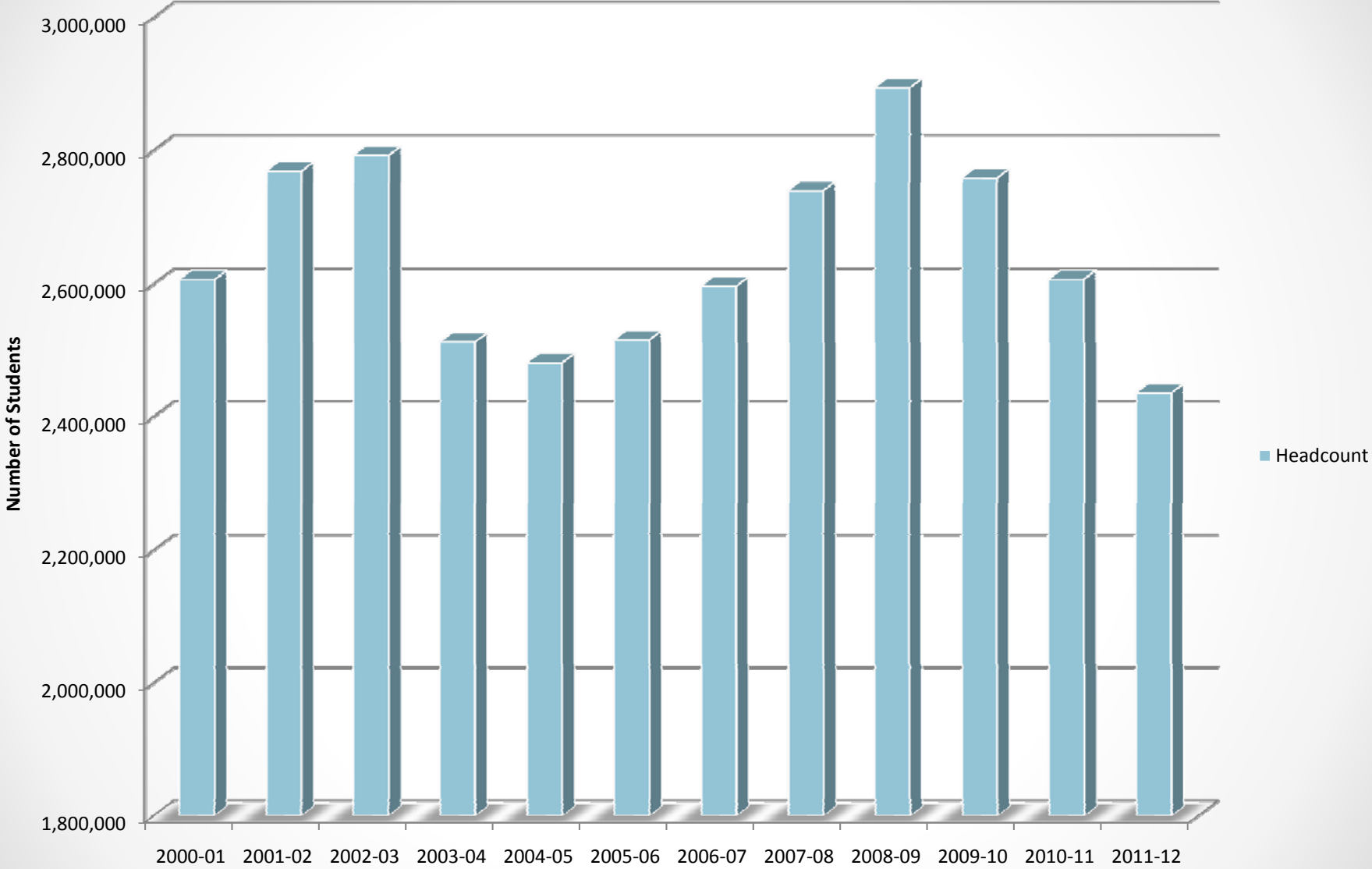
2011-12:

- More than \$300 million cut with possibility of mid-year “triggers”
- Student fees raised from \$26 to \$36 with possibility of \$46

No COLA received since 2007-08

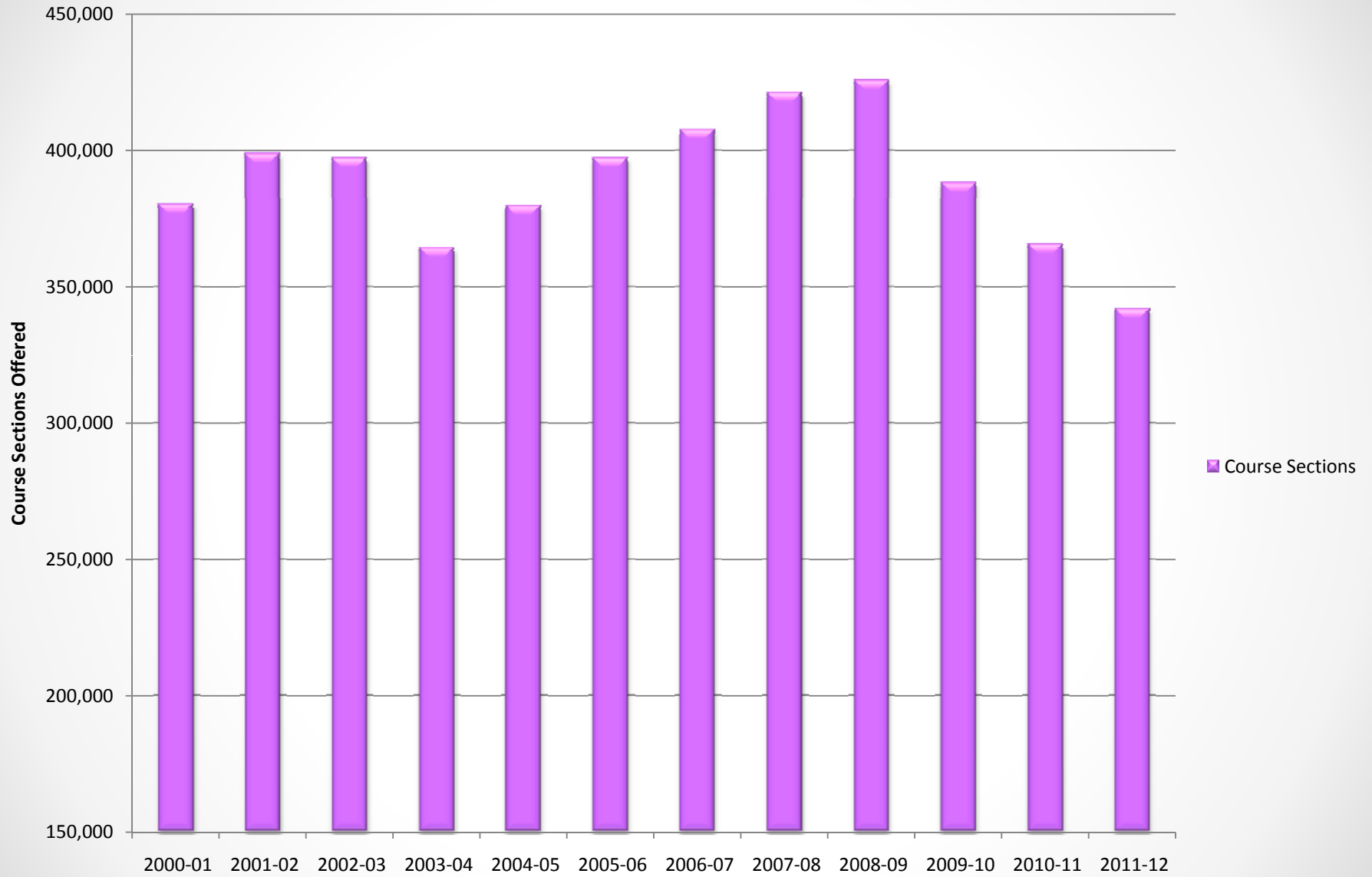


Community College Student Headcount



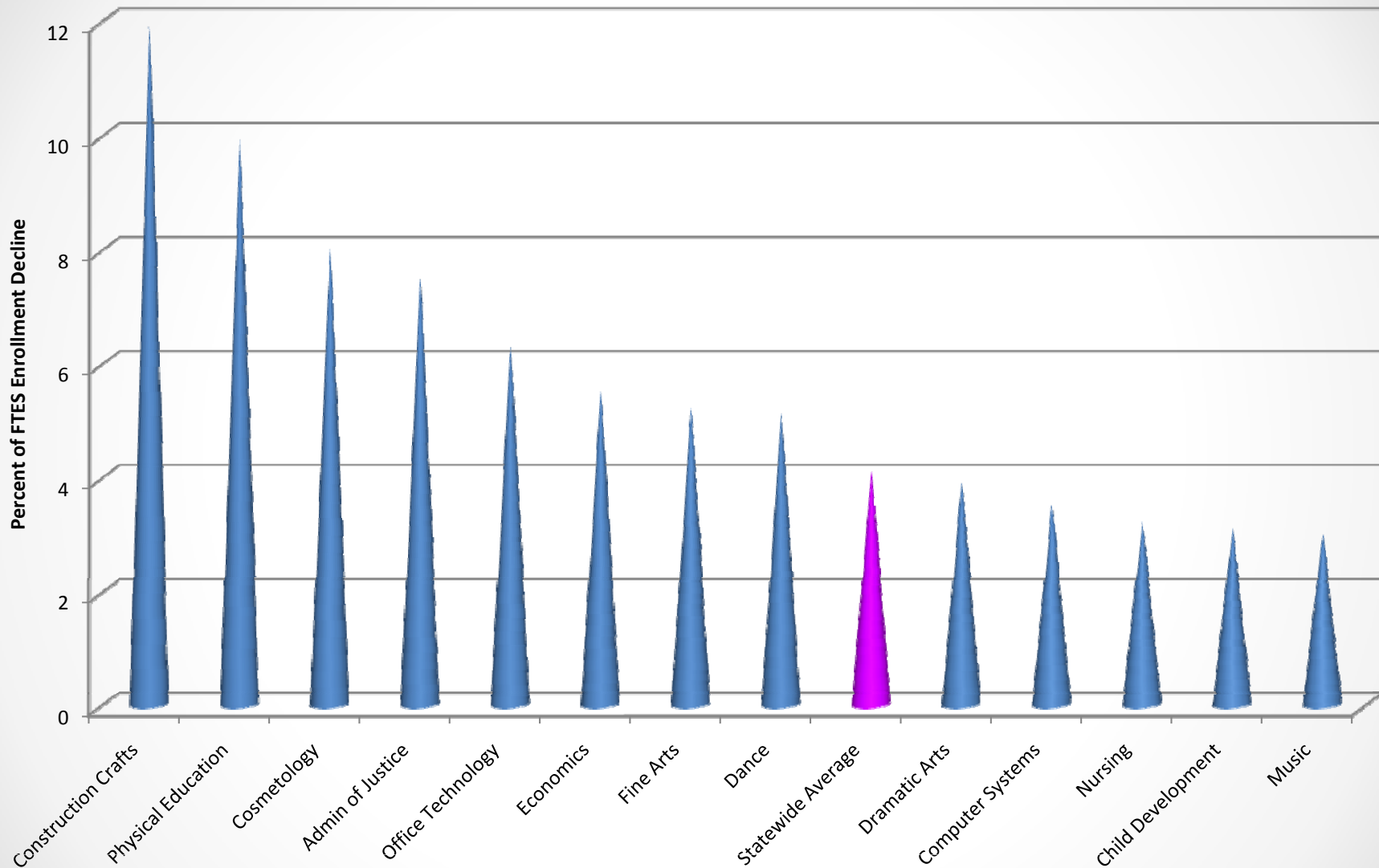
Data for 2011-12 is estimated at 93.5% of 2010-11.

Community College Course Sections



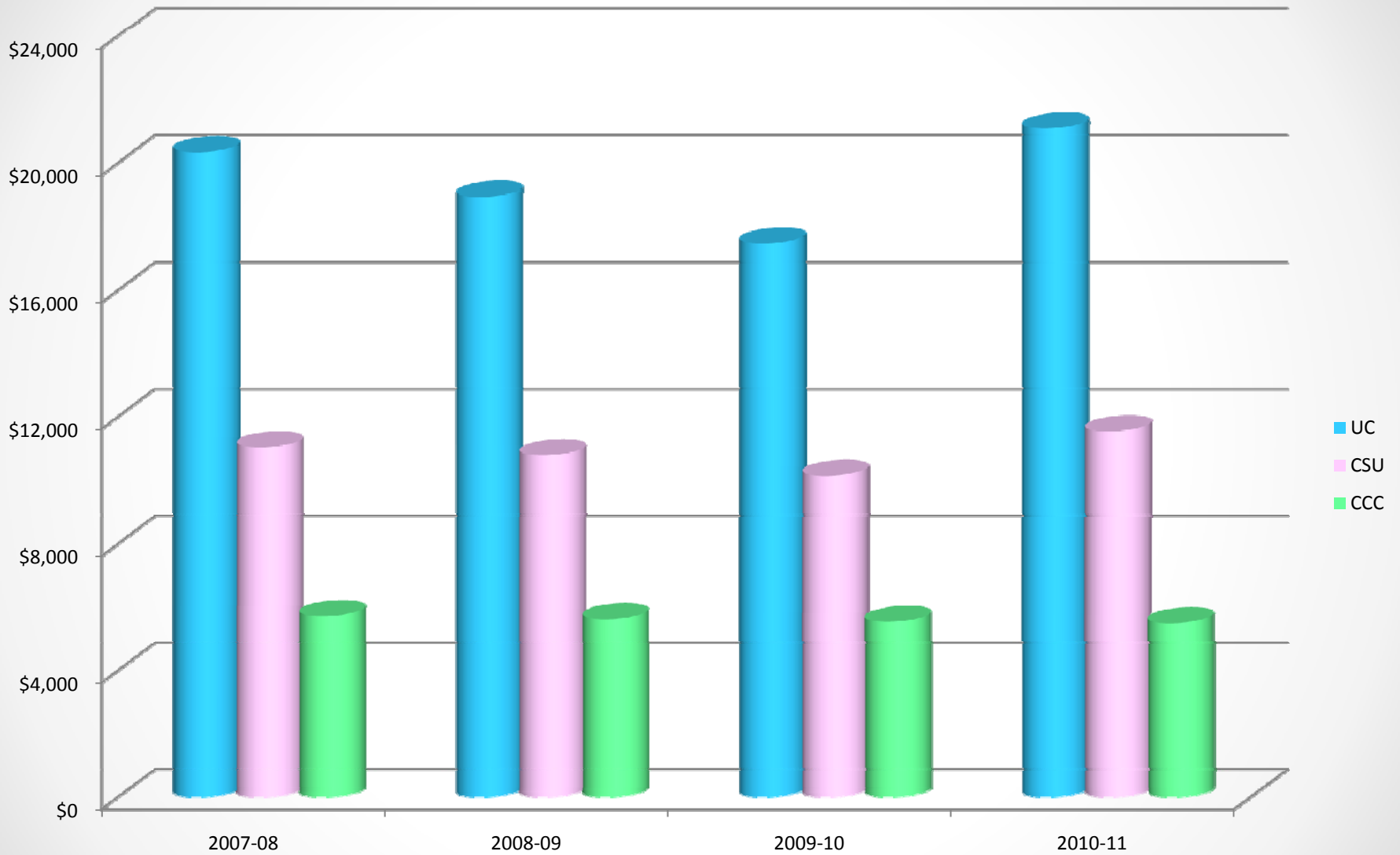
Course sections for 2011-12 estimated at 93.5% of 2010-11.

Community College Curricula Reductions From 2009-10 to 2010-11



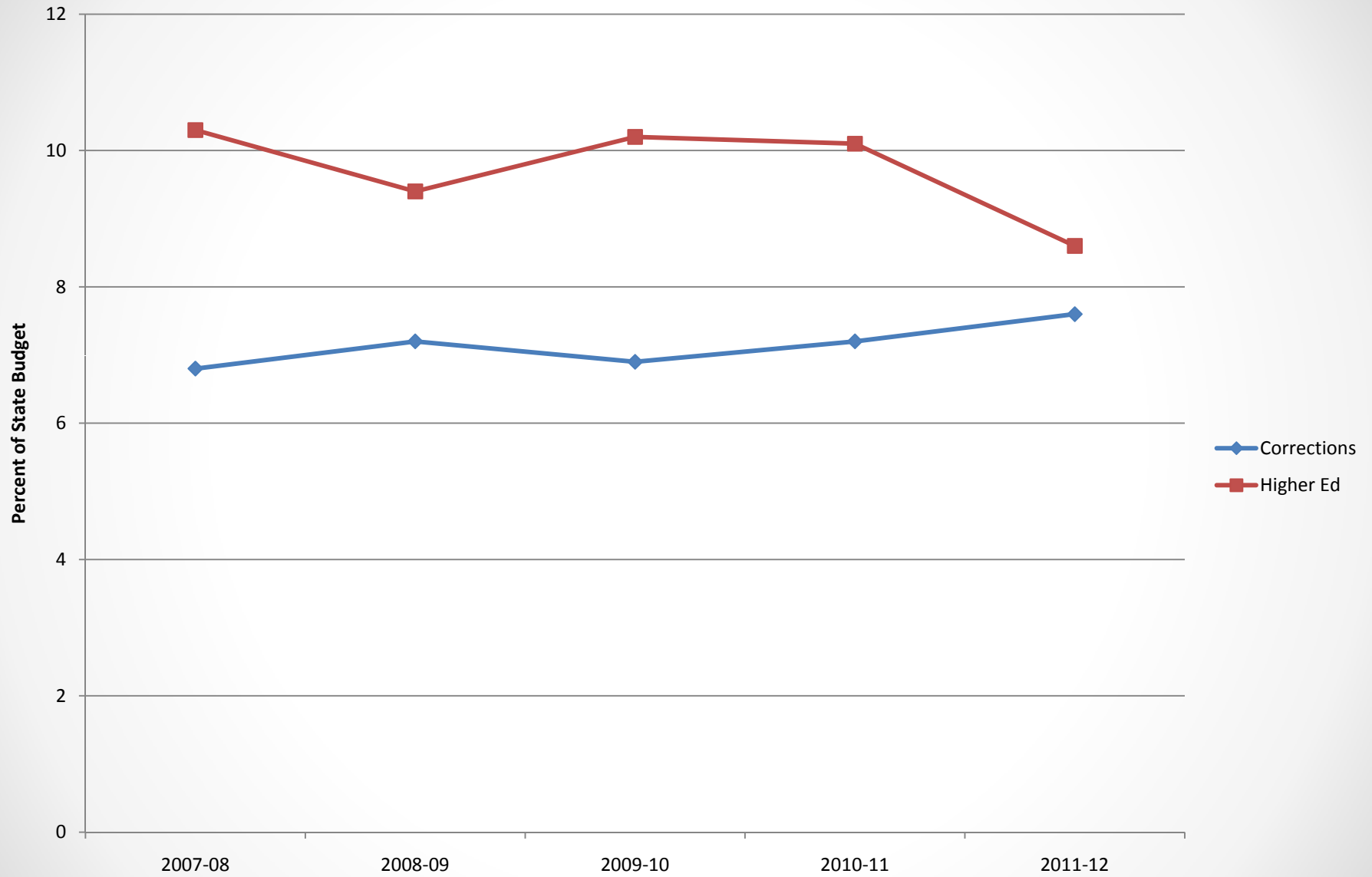
One year decline in FTES enrolled in specific curricular areas from 2009-10 to 2010-11, for curricular areas with more than 3,000 FTES that decreased by 3% or more.

Higher Education Funding Per Full-Time Equivalent Student by Segment



Source: Legislative Analyst's Office, January 2011. Funding sources include state general fund, local property taxes, student fee revenue, and federal stimulus funding.

Percentage of State Budget: Higher Education and Corrections



Source: Department of Finance

Impact of Cuts on Students

- Course sections reduced by 5% to 15% in most colleges
- Class wait lists doubled and tripled
- Average class size increased from 29 to 31
- Many summer and winter sessions were eliminated

Impact of Cuts on Districts

- 97% of districts reduced adjunct faculty
- Classified and management staff were also subject to layoffs and/or furloughs
- Most districts have been spending their reserves
- Statewide \$1 billion backlog in deferred maintenance